

Why You Should Read This: The document below reviews the environmental impact likely from a State Revolving Fund project. As part of the environmental review, you are entitled to provide comments. If you have concerns about the environmental impact of this project, raise them now. We encourage public input in this decision-making process.



IOWA STATE REVOLVING FUND
FINDING OF NO SIGNIFICANT IMPACT

June 1, 2026

To: All Interested Citizens, Government Agencies, and Public Groups

An environmental review has been performed based on the procedures for implementing the National Environmental Policy Act (NEPA), for the proposed agency action below:

Applicant: City of Oskaloosa

County: Mahaska

State: Iowa

SRF Number: CS1921088 01

Iowa DNR Project Number: W2022-0004A

The City of Oskaloosa, Iowa is planning an upgrade to their wastewater infrastructure. The city has applied for financial assistance through the State Revolving Fund (SRF) loan program to build the project. The State Revolving Loan Program is a program authorized by the Environmental Protection Agency (EPA) and administered by the Iowa Department of Natural Resources (DNR) in partnership with the Iowa Finance Authority. This project will not be receiving federal funds through SRF.

The City of Oskaloosa is located in Mahaska County, Iowa approximately 60 miles southeast of Des Moines, Iowa and 80 miles southwest of Cedar Rapids, Iowa. The population of Oskaloosa according to the 2020 US Census was 11,558. The population is anticipated to remain static.

Oskaloosa owns and operates two wastewater treatment facilities (WWTFs) in the northeast and southwest areas of the city referred to as the NE and SW WWTFs. The NE WWTF is a single-stage, rock-media trickling filter plant originally constructed over 70 years ago. The SW WWTF is a single stage, activated sludge plant originally constructed nearly 50 years ago. The existing SW WWTF exceeds its permitted capacity during peak months, is overloaded based on flow and load, periodically bypasses wastewater during less than 10-year storm events, has deteriorating structures, and cannot accept future industrial growth.

The purpose of this project is to make improvements to the wastewater treatment facilities to enhance their reliability, increase capacity and to replace obsolete system to safely and reliably operate the City of Oskaloosa's wastewater system for the next 20 years.

A new 6.3 million gallons per day (MGD) SW water resource recovery facility (New SW WRRF) will be constructed adjacent to the existing SW WWTF which will be abandoned, or demolished. This is Phase 1 of a

New Combined WRRF at the southwest site. The facility will accommodate expansion in Phases 2 and 3 to handle wastewater from the NE WWTF and additional growth/industry.

The New SW WRRF (Phase 1-Combined WRRF) will include a Headworks Building with screening and grit removal; two oxidation ditches for biological nutrient removal (BNR); three final clarifiers; UV disinfection; two aerobic digestors; a Biosolids Building with return activated sludge/waste activated sludge pumping, blower room, two centrifuges and polymer feed for sludge dewatering; a Dewatered Biosolids Storage Building and miscellaneous related improvements. The NE WWTF will remain in service with some upgrades to existing infrastructure such as electrical improvements, architectural/structural and process improvements. The M-Street Pump Station will get an internet connection for remote access and communications.

The treated wastewater from the northeast facility discharges into a small unnamed receiving stream which empties into Spring Creek. The treated wastewater from the southwest facility discharges into a small unnamed receiving stream which empties into Little Muchakinock Creek. Both Spring Creek and Little Muchakinock Creek are Class A2 and Class B (WW2) waters.

Class A2 waters are secondary contact recreational use waters in which recreational or other uses may result in contact with the water that is either incidental or accidental. During the recreational use, the probability of ingesting appreciable quantities of water is minimal. Class A2 uses include fishing, commercial and recreational boating, any limited contact incidental to shoreline activities and activities in which users do not swim or float in the water body while on a boating activity. Waters designated Class B (WW2) are those in which flow or other physical characteristics are capable of supporting a resident aquatic community that includes a variety of native nongame fish and invertebrate species. The flow and other physical characteristics limit the maintenance of warm water game fish populations. These waters generally consist of small perennially flowing streams.

The 2022 Preliminary Engineering Report looked at several options for addressing the wastewater treatment concerns in Oskaloosa. A first option included upgrading the existing facilities by replacing the existing treatment plant. Improvements included new preliminary treatment facilities, new biological removal systems, disinfection, and rehabilitation of the sludge processing systems. The second option included construction of an entirely new activated sludge treatment plant to be constructed at the existing wastewater treatment facility at the Southwest Plant site. The new facility will include nutrient removal capabilities and new disinfection system. The third option included construction of an entirely new activated sludge treatment plant to be constructed at the existing wastewater treatment facility at the Northeast Plant site. The new facility will include nutrient removal capabilities and new disinfection system.

In 2022 the third option was selected, due to the age and condition of existing facilities. However, Amendment No.1 was issued in October of 2025 and it was decided to revise and go with the second option as a phased approach. Development of the northeast facility would require the installation of a force main from the Southwest Plant. This option carried high costs and lacked the benefits of the second option being able to serve the certified industrial certified site in the event of future growth. As such, the southwest location was chosen to develop.

The New SW WWTF is being designed with flexibility to accommodate all flows from the NE WWTF and additional industrial-certified site growth in a phased approach. In approximately 10 years, the City should reevaluate options for the NE WWTF, including reevaluation of existing flows, loads, conditions, and the potential for growth within the service area. The project site was selected for the availability of land (it is already city-owned) as well as minimization of the impacts to the environment.

The project will not significantly affect the pattern and type of land use (industrial, commercial, agricultural, recreational, residential) or growth and distribution of population. The project will not conflict with local, regional or State land use plans or policies.

The Army Corps of Engineers indicated that impacts to wetlands are not anticipated. Endangered Species Act Section 7 consultation is not required for this non-federal SRF project. Section 9 of the Endangered Species Act may apply and other wildlife conservation laws such as the Migratory Bird Treaty Act of 1918 and the Bald and Golden Eagle Protection Act of 1940. If any State- or Federally-listed threatened or endangered species or communities are found during the planning or construction phases, additional studies and/or mitigation may be required. Section 9 of the Endangered Species Act may apply and other wildlife conservation laws such as the Migratory Bird Treaty Act of 1918 and the Bald and Golden Eagle Protection Act of 1940.

The project will not displace population, alter the character of existing residential areas, or convert significant farmlands to non-agricultural purposes. Impacts to floodplains are not anticipated. The project will not have effect on parklands, preserves, other public lands, or areas of recognized scenic or recreational value.

Various Native American tribes with an interest in the area and the Certified Local Government were provided information regarding the project. No objections were received. This project will not be receiving federal funds through SRF. As such, this project is not considered a federal undertaking as defined in §300320 under the National Historic Preservation Act, 54 U.S.C. 300101 et seq. for the purpose of the SRF environmental review.

If this SRF project receives federal funds from other sources, it is the responsibility of the applicant to ensure all federal requirements are met for that funding. If project activities uncover any item(s) that might be of archaeological, historical, or architectural interest, or if important new archaeological, historical, or architectural data should be encountered in the project APE, the applicant should make reasonable efforts to avoid further impacts to the property until an assessment can be made by an individual meeting the Secretary of the Interior's professional qualifications standards (36 CFR Part 61).

The project will not have a significant adverse effect upon local ambient air quality provided the applicant takes reasonable precautions to prevent the discharge of visible emissions of fugitive dusts beyond the lot line of the property during the proposed project (567 IAC 23.3(2)“c”). The project will not have a significant adverse effect upon local ambient noise levels, surface water quantity, groundwater quality or quantity, or water supply. No significant impact to surface water quality, fish, shellfish, wildlife, or their natural habitats is expected provided that an NPDES General Permit Number 2 (for storm water discharge associated with construction activities) is obtained and the terms of which are abided by.

Minimum separation distances will be maintained. Noise during construction will be maintained at tolerable levels through controls on construction activities. Any construction debris will be removed from the site for proper disposal. Adverse environmental effects from construction activities will be minimized with proper construction practices, inspection, prompt clean up and other appropriate measures. Areas temporarily disturbed by the construction will be restored.

It has been determined that the proposed action will result in no significant impacts to the surrounding environment. This determination is based on a careful review of the engineering report, the environmental assessment and other supporting data which are on file at the Department of Natural Resources' office in Des Moines, Iowa. These are available for public review upon request. A copy of the environmental assessment is attached.

This Department will not take any administrative action on the project for at least thirty (30) calendar days from the above date. Persons disagreeing with the above environmental decision may submit comments to the department during this period. Your comments can be sent to SRF-PC@dnr.iowa.gov or directly to me at karrie.darnell@dnr.iowa.gov or 515-901-6817.

Sincerely,

Karrie Darnell
Environmental Specialist Senior
6200 Park Ave, Suite 200
Des Moines, IA 50321

Enclosures: Environmental Assessment Document
Project Map

Distribution

List (email): Laurie Twitchell, Strand Associates, Inc
Edward Boling, Council on Environmental Quality
Jake Hansen, Iowa Department of Agriculture and Land Stewardship
Ken Sharp, Iowa Department of Health & Human Services
Mindy Wells, Iowa Department of Health & Human Services
Chad Sands, Iowa Economic Development Authority
Alicia Vasto, Iowa Environmental Council
Michael Schmidt, Iowa Environmental Council
Tony Toigo, Iowa Finance Authority
Lee Wagner, Iowa Finance Authority
Yolanda Attaway, Iowa Finance Authority
Mickey Shields, Iowa League of Cities
Jane Clark, Sierra Club
Josh Mandelbaum, Environmental Law and Policy Center
Kate Sand, USDA Rural Development
Tokey Boswell, USDO, National Park Service, Midwest Region
Kraig McPeck, Fish and Wildlife Service, Rock Island Field Office
Ann D'Alfonso, USEPA Region VII
Oksaloosa Herald

Why You Should Read This: The document below reviews the environmental impact likely from a State Revolving Fund project. As part of the environmental review, you are entitled to provide comments. If you have concerns about the environmental impact of this project, raise them now. We encourage public input in this decision making process.



IOWA STATE REVOLVING FUND
ENVIRONMENTAL ASSESSMENT DOCUMENT

PROJECT IDENTIFICATION

Applicant: City of Oskaloosa
County: Mahaska
State: Iowa

SRF Number: CS1921088 01
Iowa DNR Project Number: W2022-0004A

COMMUNITY DESCRIPTION

Location: The City of Oskaloosa is located in Mahaska County, Iowa approximately 60 miles southeast of Des Moines, Iowa and 80 miles southwest of Cedar Rapids, Iowa.

Population: The population of Oskaloosa according to the 2020 US Census was 11,558. The population is anticipated to remain static.

Current Waste Treatment: Oskaloosa owns and operates two wastewater treatment facilities (WWTFs) in the northeast and southwest areas of the city referred to as the NE and SW WWTFs. The NE WWTF is a single-stage, rock-media trickling filter plant originally constructed over 70 years ago. The SW WWTF is a single stage, activated sludge plant originally constructed nearly 50 years ago. The existing SW WWTF exceeds its permitted capacity during peak months, is overloaded based on flow and load, periodically bypasses wastewater during less than 10-year storm events, has deteriorating structures, and cannot accept future industrial growth.

PROJECT DESCRIPTION

Purpose: The purpose of this project is to make improvements to the wastewater treatment facilities to enhance their reliability, increase capacity and to replace obsolete system to safely and reliably operate the City of Oskaloosa's wastewater system for the next 20 years.

Proposed Improvements: A new 6.3 million gallons per day (MGD) SW water resource recovery facility (New SW WRRF) will be constructed adjacent to the existing SW WWTF which will be abandoned, or demolished. This is Phase 1 of a New Combined WRRF at the southwest site. The facility will accommodate expansion in Phases 2 and 3 to handle wastewater from the NE WWTF and additional growth/industry.

The New SW WRRF (Phase 1-Combined WRRF) will include a Headworks Building with screening and grit removal; two oxidation ditches for biological nutrient removal (BNR); three final clarifiers; UV disinfection; two aerobic digestors; a Biosolids Building with return activated sludge/waste activated sludge pumping, blower room, two centrifuges and polymer feed for sludge dewatering; a Dewatered Biosolids Storage Building and

miscellaneous related improvements. The NE WWTF will remain in service with some upgrades to existing infrastructure such as electrical improvements, architectural/structural and process improvements. The M-Street Pump Station will get an internet connection for remote access and communications.

Receiving Stream: The treated wastewater from the northeast facility discharges into a small unnamed receiving stream which empties into Spring Creek. The treated wastewater from the southwest facility discharges into a small unnamed receiving stream which empties into Little Muchakinock Creek. Both Spring Creek and Little Muchakinock Creek are Class A2 and Class B (WW2) waters.

Class A2 waters are secondary contact recreational use waters in which recreational or other uses may result in contact with the water that is either incidental or accidental. During the recreational use, the probability of ingesting appreciable quantities of water is minimal. Class A2 uses include fishing, commercial and recreational boating, any limited contact incidental to shoreline activities and activities in which users do not swim or float in the water body while on a boating activity. Waters designated Class B (WW2) are those in which flow or other physical characteristics are capable of supporting a resident aquatic community that includes a variety of native nongame fish and invertebrate species. The flow and other physical characteristics limit the maintenance of warm water game fish populations. These waters generally consist of small perennially flowing streams.

Alternatives Considered: The 2022 Preliminary Engineering Report looked at several options for addressing the wastewater treatment concerns in Oskaloosa. A first option included upgrading the existing facilities by replacing the existing treatment plant. Improvements included new preliminary treatment facilities, new biological removal systems, disinfection, and rehabilitation of the sludge processing systems. The second option included construction of an entirely new activated sludge treatment plant to be constructed at the existing wastewater treatment facility at the Southwest Plant site. The new facility will include nutrient removal capabilities and new disinfection system. The third option included construction of an entirely new activated sludge treatment plant to be constructed at the existing wastewater treatment facility at the Northeast Plant site. The new facility will include nutrient removal capabilities and new disinfection system. In 2022 the third option was selected, due to the age and condition of existing facilities. However, Amendment No.1 was issued in October of 2025 and it was decided to revise and go with the second option as a phased approach. Development of the northeast facility would require the installation of a force main from the Southwest Plant. This option carried high costs and lacked the benefits of the second option being able to serve the certified industrial certified site in the event of future growth. As such, the southwest location was chosen to develop.

Reasons for Selection of Proposed Alternative: The New SW WWTF is being designed with flexibility to accommodate all flows from the NE WWTF and additional industrial-certified site growth in a phased approach. In approximately 10 years, the City should reevaluate options for the NE WWTF, including reevaluation of existing flows, loads, conditions, and the potential for growth within the service area. The project site was selected for the availability of land (it is already city-owned) as well as minimization of the impacts to the environment.

MEASURES TAKEN TO ASSESS IMPACT

Public Involvement: A public hearing was held on March 2, 2026 at 6:00PM at the City's regular council meeting. The public notice of this hearing was made available by publication in the Oskaloosa Herald on January 24, 2026 and posted in public locations on January 24, 2026. The purpose of this hearing was to present the environmental and financial impacts of the proposed improvement project. No written or oral comments were received.

Coordination and Documentation with Other Agencies and Special Interest Groups: The following Federal, state and local agencies were provided an opportunity to comment on the proposed project to better assess the potential impact to the environment:

U.S. Army Corps of Engineers
Iowa DNR Flood Plain Management Section
Citizen Band Potawatomi Indian Tribe
Flandreau Santee Sioux
Ho-Chunk Nation
Iowa Tribe of Kansas and Nebraska
Iowa Tribe of Oklahoma
Kickapoo Tribe in Kansas
Kickapoo Tribe of Oklahoma
Lower Sioux Indian Community Council
Miami Tribe of Oklahoma
Omaha Tribe of Nebraska
Otoe-Missouria Tribe
Pawnee Nation of Oklahoma
Peoria Tribe of Indians of Oklahoma
Ponca Tribe of Indians of Oklahoma
Ponca Tribe of Nebraska
Prairie Band Potawatomi Nation
Prairie Island Indian Community
Sac & Fox Nation of Mississippi in Iowa
Sac & Fox Nation of Missouri
Sac & Fox Nation of Oklahoma
Santee Sioux Nation
Shakopee Mdewakanton Sioux Community
Sisseton-Wahpeton Oyate
Spirit Lake Tribal Council
Three Affiliated Tribes Mandan, Hidatsa & Arikara Nations
Upper Sioux Tribe
Winnebago Tribal Council
Yankton Sioux Tribe
Oskaloosa Historic Preservation Commission

No adverse comments have been received from any agencies or general public to date. Conditions placed on the applicant by the above agencies in order to assure no significant impact are included in the Summary of Reasons for Concluding No Significant Impact section.

ENVIRONMENTAL IMPACT SUMMARY

Construction: Traffic patterns within the community may be disrupted and above normal noise levels in the vicinity of the construction equipment can be anticipated during construction and should be a temporary problem. Adverse environmental impacts on noise quality will be handled by limited hours of contractor work time during the day. Other adverse environmental effects from construction activities will be minimized by proper construction practices, inspection, prompt cleanup, and other appropriate measures. Areas temporarily disturbed by the construction will be restored. Solid wastes resulting from the construction

project will be regularly cleared away with substantial efforts made to minimize inconvenience to area residents.

Care will be taken to maintain dirt to avoid erosion and runoff. The proposed project will disturb one or more acres of soil; therefore, the applicant is required to obtain an NPDES General Permit Number 2 (for storm water discharge associated with construction activities) and abide by its terms. Provided that this permit is obtained and the terms of which are abided by, no significant impact to surface water quality, fish, shellfish, wildlife, or their natural habitats is expected.

Temporary air quality degradation may occur due to dust and fumes from construction equipment. The applicant shall take reasonable precautions to prevent the discharge of visible emissions of fugitive dusts beyond the lot line of the property during the proposed project (567 Iowa Administrative Code IAC 23.3(2)“c”). This project does not include construction of equipment that has a potential to emit criteria pollutants or hazardous air pollutants above minor source reporting thresholds.

This project may require the disposal of sewage sludge. It is the responsibility of the applicant to ensure that the disposal of any sewage sludge complies with applicable requirements found in 40 CFR Part 503 and 567 Iowa Administrative Code IAC 67.

Historical/Archaeological: Various Native American tribes with an interest in the area and the Certified Local Government were provided information regarding the project. This project will not be receiving federal funds through SRF. As such, this project is not considered a federal undertaking as defined in §300320 under the National Historic Preservation Act, 54 U.S.C. 300101 et seq. for the purpose of the SRF environmental review. If this SRF project receives federal funds from other sources, it is the responsibility of the applicant to ensure all federal requirements are met for that funding.

However, if project activities uncover any item(s) that might be of archaeological, historical, or architectural interest, or if important new archaeological, historical, or architectural data should be encountered in the project area, the applicant should make reasonable efforts to avoid further impacts to the property until an assessment can be made by an individual meeting the Secretary of the Interior’s professional qualifications standards (36 CFR Part 61).

Environmental: The project area was screened for the presence of wetlands, floodplains, and sovereign lands. The Army Corps of Engineers indicated that impacts to wetlands are not anticipated. Impacts to floodplains are not anticipated. The proposed project will not interfere with any State-owned parks, recreational areas or open spaces. The project will not impact any wild and scenic rivers as none exist within the State of Iowa. The City must obtain any necessary permits (local, state, federal) prior to construction.

Endangered Species Act Section 7 consultation is not required for this non-federal SRF project. Section 9 of the Endangered Species Act may apply and other wildlife conservation laws such as the Migratory Bird Treaty Act of 1918 and the Bald and Golden Eagle Protection Act of 1940. This project area has been reviewed for the presence of endangered/threatened species and we have determined this project will have no effect on the listed species. However, if any State- or Federally-listed threatened or endangered species or communities are found during the planning or construction phases, additional studies and/or mitigation may be required. No adverse impacts are expected to result from this project, such as those to surface water quantity, or groundwater quality or quantity.

Land Use and Trends: The project will not displace population nor will it alter the character of existing residential areas. The proposed project is within the present corporate limits of Oskaloosa in areas zoned residential, commercial, or industrial. No significant farmlands will be impacted.

This project should not impact population trends as the presence or absence of existing wastewater infrastructure is unlikely to induce significant alterations in the population growth or distribution given the myriad of factors that influence development in this region. Similarly, this project is unlikely to induce significant alterations in the pattern and type of land use.

Irreversible and Irrecoverable Commitment of Resources: Fuels, materials, and various forms of energy will be utilized during construction.

Nondiscrimination: All programs, projects, and activities undertaken by DNR in the SRF programs are subject to federal anti-discrimination laws, including the Civil Rights Act of 1964, section 504 of the Rehabilitation Act of 1973, and section 13 of the Federal Water Pollution Control Amendments of 1972. These laws prohibit discrimination on the basis of race, color, national origin, sex, disability, or age.

POSITIVE ENVIRONMENTAL EFFECTS TO BE REALIZED FROM THE PROPOSED PROJECT

Positive environmental effects will be improved treatment of the wastewater from the City of Oskaloosa, compliance with effluent discharge permit limits, and improved water quality in the receiving stream.

SUMMARY OF REASONS FOR CONCLUDING NO SIGNIFICANT IMPACT

- The project will not significantly affect the pattern and type of land use (industrial, commercial, agricultural, recreational, residential) or growth and distribution of population.
- The project will not conflict with local, regional or State land use plans or policies.
- The Army Corps of Engineers indicated that impacts to wetlands are not anticipated.
- Endangered Species Act Section 7 consultation is not required for this non-federal SRF project. Section 9 of the Endangered Species Act may apply and other wildlife conservation laws such as the Migratory Bird Treaty Act of 1918 and the Bald and Golden Eagle Protection Act of 1940. If any State- or Federally-listed threatened or endangered species or communities are found during the planning or construction phases, additional studies and/or mitigation may be required. Section 9 of the Endangered Species Act may apply and other wildlife conservation laws such as the Migratory Bird Treaty Act of 1918 and the Bald and Golden Eagle Protection Act of 1940.
- The project will not displace population, alter the character of existing residential areas, or convert significant farmlands to non-agricultural purposes.
- Impacts to floodplains are not anticipated.
- The project will not have effect on parklands, preserves, other public lands, or areas of recognized scenic or recreational value.
- Various Native American tribes with an interest in the area and the Certified Local Government were provided information regarding the project. No objections were received.
- This project will not be receiving federal funds through SRF. As such, this project is not considered a federal undertaking as defined in §300320 under the National Historic Preservation Act, 54 U.S.C. 300101 et seq. for the purpose of the SRF environmental review. If this SRF project receives federal funds from other sources, it is the responsibility of the applicant to ensure all federal requirements are met for that funding.
- If project activities uncover any item(s) that might be of archaeological, historical, or architectural interest, or if important new archaeological, historical, or architectural data should be encountered in the project APE, the applicant should make reasonable efforts to avoid further impacts to the property until an assessment can be made by an individual meeting the Secretary of the Interior's professional qualifications standards (36 CFR Part 61).

- The project will not have a significant adverse effect upon local ambient air quality provided the applicant takes reasonable precautions to prevent the discharge of visible emissions of fugitive dusts beyond the lot line of the property during the proposed project (567 IAC 23.3(2)“c”).
- The project will not have a significant adverse effect upon local ambient noise levels, surface water quantity, groundwater quality or quantity, or water supply.
- No significant impact to surface water quality, fish, shellfish, wildlife, or their natural habitats is expected provided that an NPDES General Permit Number 2 (for storm water discharge associated with construction activities) is obtained and the terms of which are abided by.

THEREFORE:

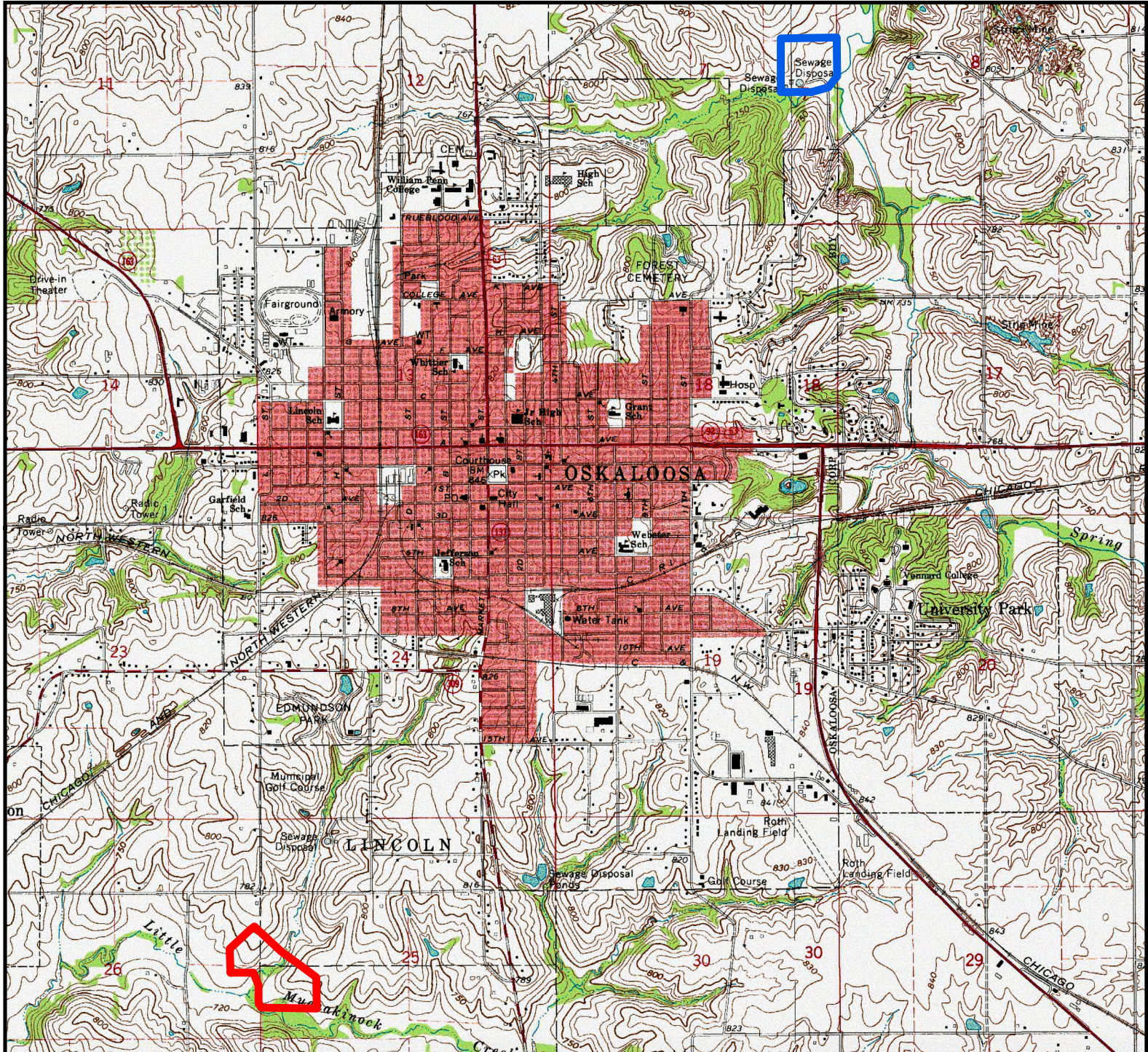
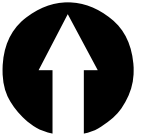
The above project conforms to the criteria in 567 Iowa Administrative Code 92.8(1)“b” for wastewater relating to compliance with the National Environmental Policy Act of 1969. This Environmental Assessment Document (EAD) outlines the justification that the environmental review for the proposed project should be classified as a Finding of No Significant Impact (FNSI) and does not rise to the significance of an Environmental Impact Statement (EIS) in accordance with 40 CFR § 1501.5.

Karrie Darnell



Environmental Review Specialist

State Revolving Fund

Iowa Department of Natural Resources

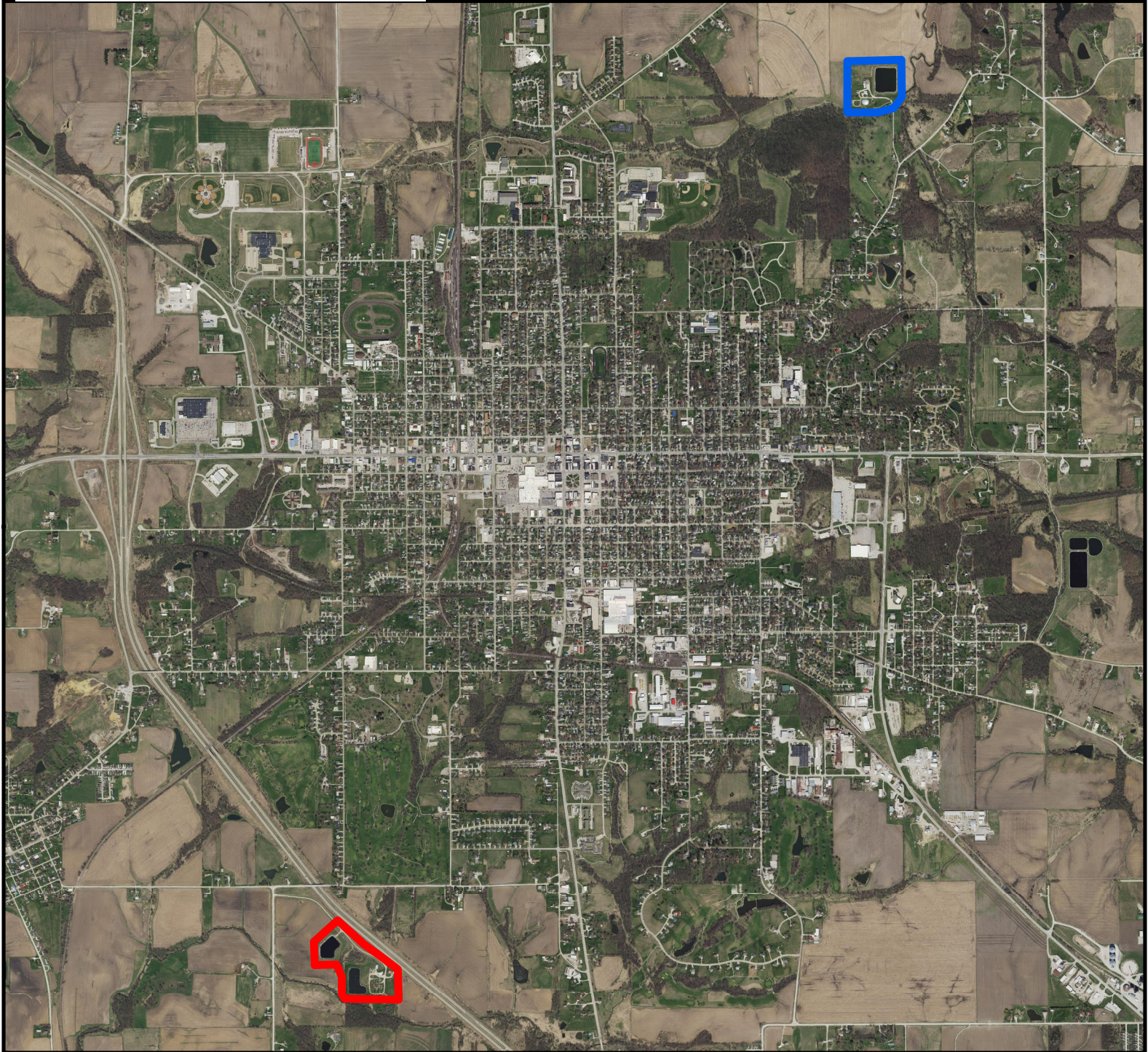
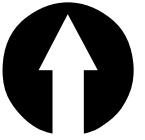


Legend



-  Oskaloosa SW WWTf APE
-  Oskaloosa NE WWTf APE

Oskaloosa Wastewater Treatment Improvements
Oskaloosa, IA (Mahaska County, Iowa)



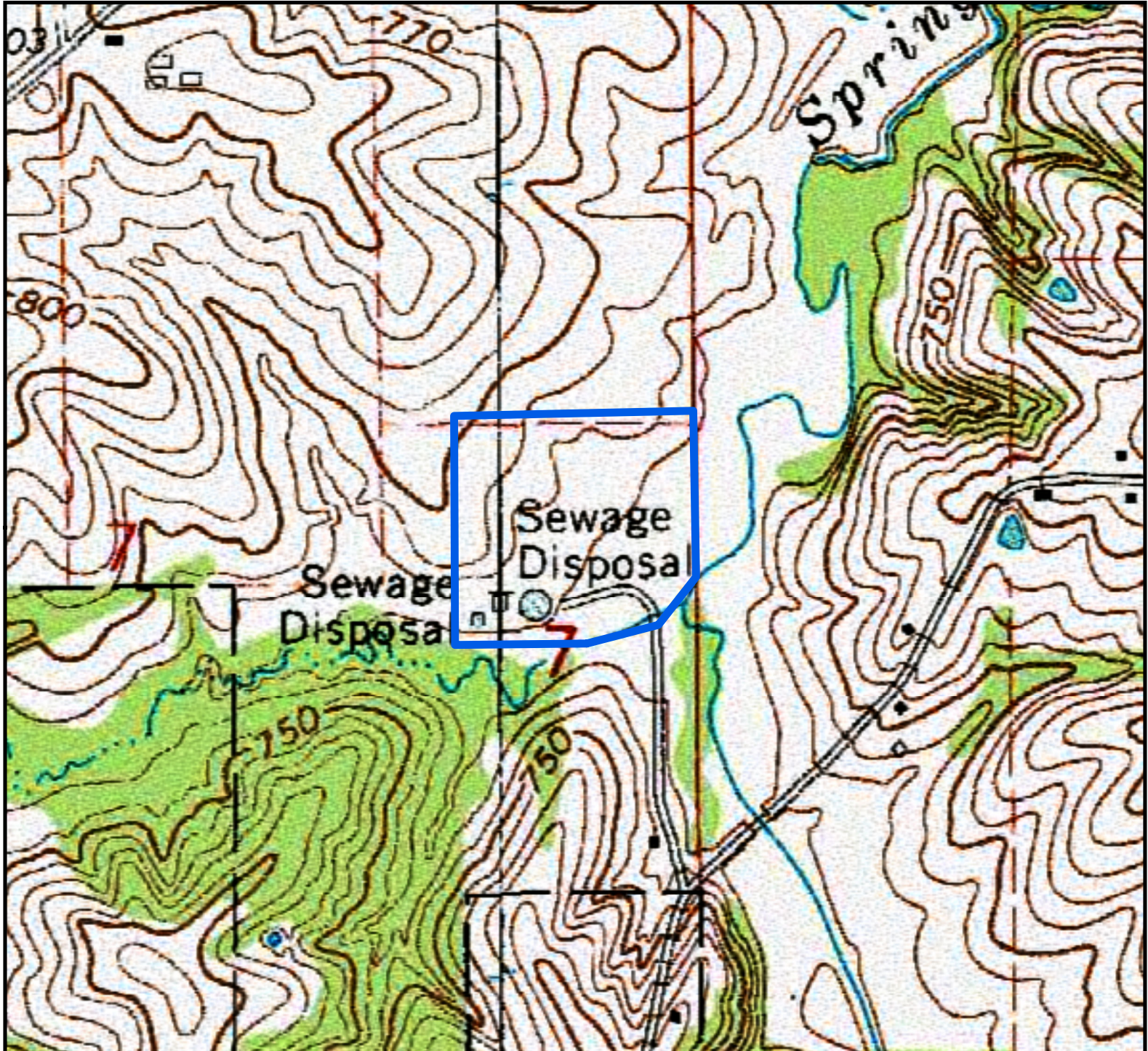
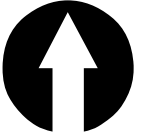


Legend



-  Oskaloosa SW WWTF APE
-  Oskaloosa NE WWTF APE

Oskaloosa Wastewater Treatment Improvements
Oskaloosa, IA (Mahaska County, Iowa)

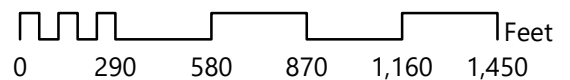


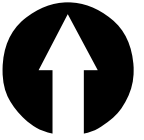


Legend



-  Oskaloosa SW WWTF APE
-  Oskaloosa NE WWTF APE

Oskaloosa Wastewater Treatment Improvements
Oskaloosa, IA (Mahaska County, Iowa)



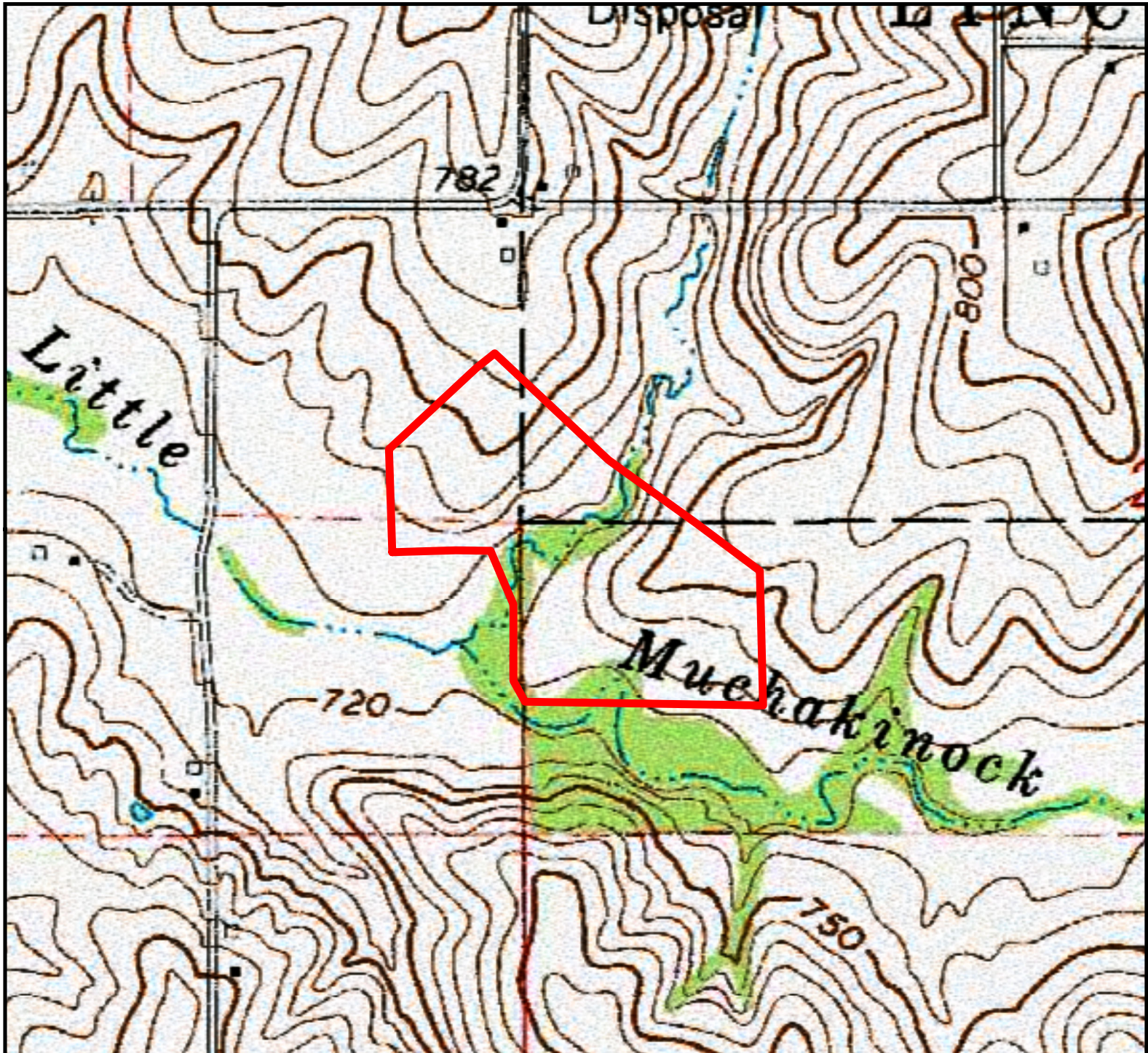
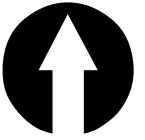


Legend



-  Oskaloosa SW WWTF APE
-  Oskaloosa NE WWTF APE

Oskaloosa Wastewater Treatment Improvements
Oskaloosa, IA (Mahaska County, Iowa)



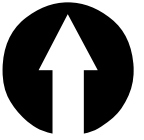


Legend



-  Oskaloosa SW WWTF APE
-  Oskaloosa NE WWTF APE

Oskaloosa Wastewater Treatment Improvements
Oskaloosa, IA (Mahaska County, Iowa)





Legend

-  Oskaloosa SW WWTF APE
-  Oskaloosa NE WWTF APE

Oskaloosa Wastewater Treatment Improvements
Oskaloosa, IA (Mahaska County, Iowa)

