

**Why You Should Read This:** The document below reviews the environmental impact likely from a State Revolving Fund project. As part of the environmental review, you are entitled to provide comments. If you have concerns about the environmental impact of this project, raise them now. We encourage public input in this decision-making process.



**IOWA STATE REVOLVING FUND**  
**CATEGORICAL EXCLUSION**

April 17, 2026

**To: All Interested Citizens, Government Agencies, and Public Groups**

An environmental review has been performed based on the procedures for implementing the National Environmental Policy Act (NEPA), for the proposed agency action below:

**Applicant:** City of Creston Water Works

**SRF Number:** FS-88-26-DWSRF-017

**County:** Union

**Iowa DNR Project Number:** W2025-0456

**State:** Iowa

The City of Creston Water Works in Creston, Iowa is planning an upgrade to their drinking water infrastructure. The city has applied for financial assistance through the State Revolving Fund (SRF) loan program to build the project. SRF is a program authorized by the Environmental Protection Agency (EPA) and administered by the Iowa Department of Natural Resources (DNR) in partnership with the Iowa Finance Authority.

The proposed project includes the replacement of lead or galvanized steel service lines between the municipal water main and the home/business. This list of addresses includes approximately 343 addresses whose service lines may be lead or galvanized steel based on current information. Resurfacing of areas disturbed by construction is also proposed. Only those lines confirmed to be lead or galvanized steel will be included in this replacement project.

The proposed project was reviewed for eligibility for a categorical exclusion from NEPA review specified in the 40 CFR (Code of Federal Regulations) Part 6.204. The project meets all criteria described in the above reference and was determined that this project is eligible for a categorical exclusion. Consequently, a preliminary decision has been made that a Finding of No Significant Impact (FNSI) will not be prepared.

Justification for granting categorical exclusion:

- The project as proposed is solely directed toward minor upgrading or minor expansion of system capacity, rehabilitation of the existing system and system components, or construction of new minor ancillary facilities adjacent to or on the same property as existing facilities.
- This project will not involve new or relocated discharges to surface or ground water.
- This project will not result in substantial increase in the volume or the loading of pollutant to the receiving water.
- The project will not serve a population 30% greater than the existing population.

- The project is not directly or indirectly involved or related to upgrading or extending infrastructure systems primarily for the purposes of future development.
- The project is not counter to the state, or other regional growth plan or strategy.
- The proposed action is not known or expected to have potentially significant environmental impacts on the quality of the human environment either individually or cumulatively over time.
- The proposed action is not known or expected to have disproportionately high and adverse human health or environmental effects on any community, including minority communities, low-income communities, or federally-recognized Indian tribal communities.
- The proposed action is not known or expected to significantly affect federally listed threatened or endangered species or their critical habitat.
- The proposed action is not known or expected to significantly affect national natural landmarks or any property with nationally significant historic, architectural, prehistoric, archeological, or cultural value, including but not limited to, property listed on or eligible for the National Register of Historic Places.
- The proposed action is not known or expected to significantly affect environmentally important natural resource areas such as wetlands, floodplains, significant agricultural lands, aquifer recharge zones, coastal zones, barrier islands, wild and scenic rivers, and significant fish or wildlife habitat.
- The proposed action is not known or expected to cause significant adverse air quality effects.
- The proposed action is not known or expected to have a significant effect on the pattern and type of land use (industrial, commercial, agricultural, recreational, residential) or growth and distribution of population including altering the character of existing residential areas, or may not be consistent with state or local government, or federally-recognized Indian tribe approved land use plans or federal land management plans.
- The proposed action is not known or expected to cause significant public controversy about a potential environmental impact of the proposed action.
- The proposed action is not known or expected to be associated with providing financial assistance to a federal agency through an interagency agreement for a project that is known or expected to have potentially significant environmental impacts.
- The proposed action is not known or expected to conflict with federal, state or local government, or federally-recognized Indian tribe environmental, resource-protection, or land-use laws or regulations.

The Department of Natural Resources shall revoke the categorical exclusion and shall require a full environmental review if, subsequent to the granting of an exclusion, the state determines that:

- The proposed project no longer meets the requirements for a categorical exclusion due to changes in the proposed project; or
- New evidence reveals that serious local or environmental issues exist; or
- Federal, State, local or tribal laws are being violated.

This action is taken on the basis of a careful review of supporting information that is on file at the Department of Natural Resources' Des Moines, Iowa office. This information is available upon request. This Department will not take any administrative action on the project for at least thirty (30) calendar days from the above date. Persons disagreeing with the above environmental decision may submit comments to the Department during this period. Your comments can be sent to [SRF-PC@dnr.iowa.gov](mailto:SRF-PC@dnr.iowa.gov) or directly to me at [Nicole.Osborn@dnr.iowa.gov](mailto:Nicole.Osborn@dnr.iowa.gov) or (515) 321-7601.

Sincerely,

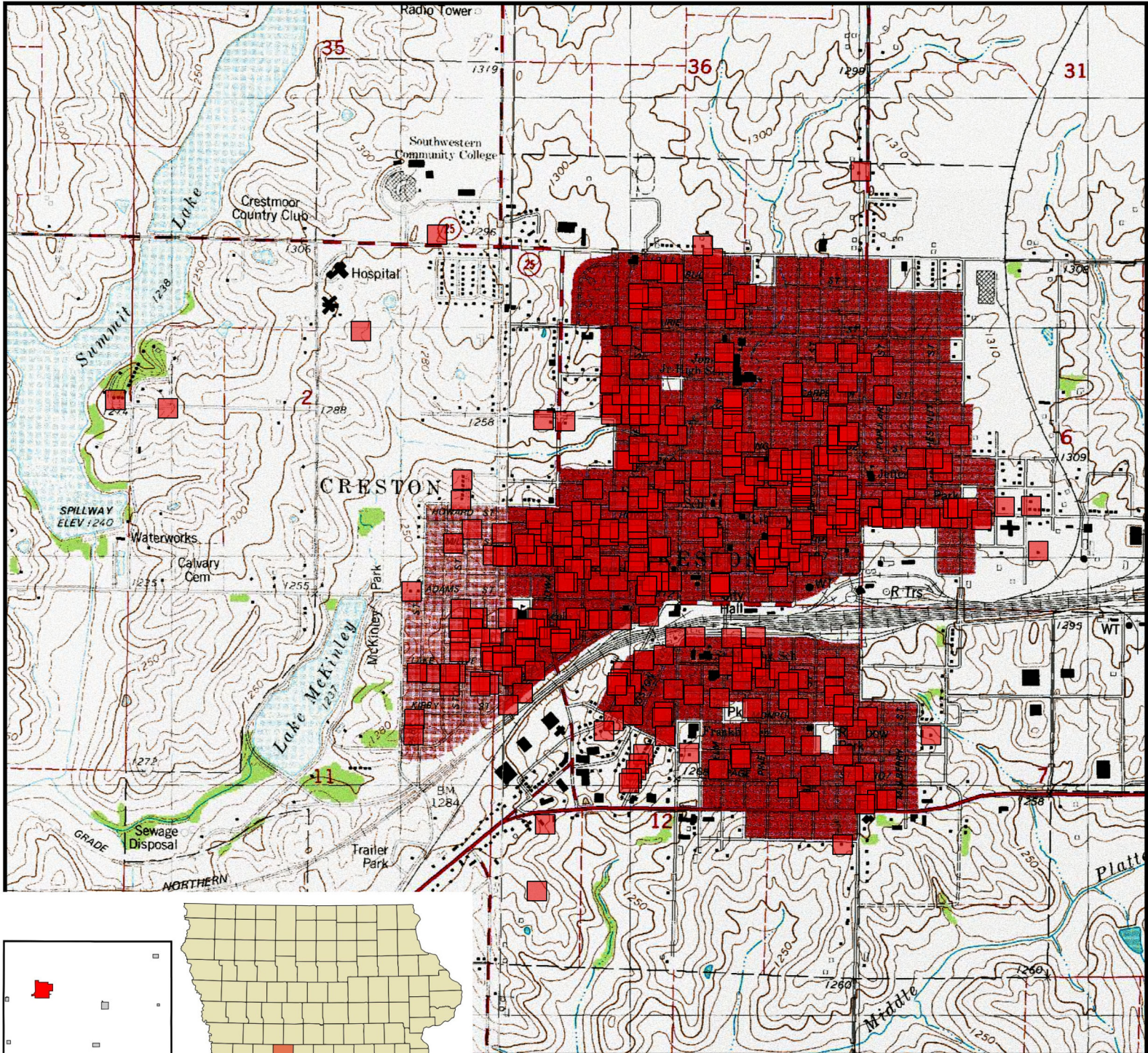
Nicole Osborn  
Environmental Review Specialist

6200 Park Ave, Suite 200  
Des Moines, IA 50321

Enclosure: Project Map  
LSL Address List

Distribution

List (email): Austin Smith, Garden & Associates  
Creston Historic Preservation Commission  
Edward Boling, Council on Environmental Quality  
Jake Hansen, Iowa Department of Agriculture and Land Stewardship  
Ken Sharp, Iowa Department of Health & Human Services  
Mindy Wells, Iowa Department of Health & Human Services  
Chad Sands, Iowa Economic Development Authority  
Alicia Vasto, Iowa Environmental Council  
Michael Schmidt, Iowa Environmental Council  
Tony Toigo, Iowa Finance Authority  
Lee Wagner, Iowa Finance Authority  
Yolanda Attaway, Iowa Finance Authority  
Mickey Shields, Iowa League of Cities  
Jane Clark, Sierra Club  
Josh Mandelbaum, Environmental Law and Policy Center  
Kate Sand, USDA Rural Development  
Tokey Boswell, USDO, National Park Service, Midwest Region  
Kraig McPeck, Fish and Wildlife Service, Rock Island Field Office  
Ann D'Alfonso, USEPA Region VII  
Creston News Advertiser



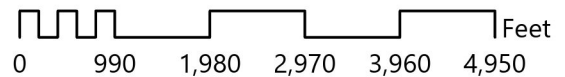
Union County. Image source: Wikipedia, 2025.

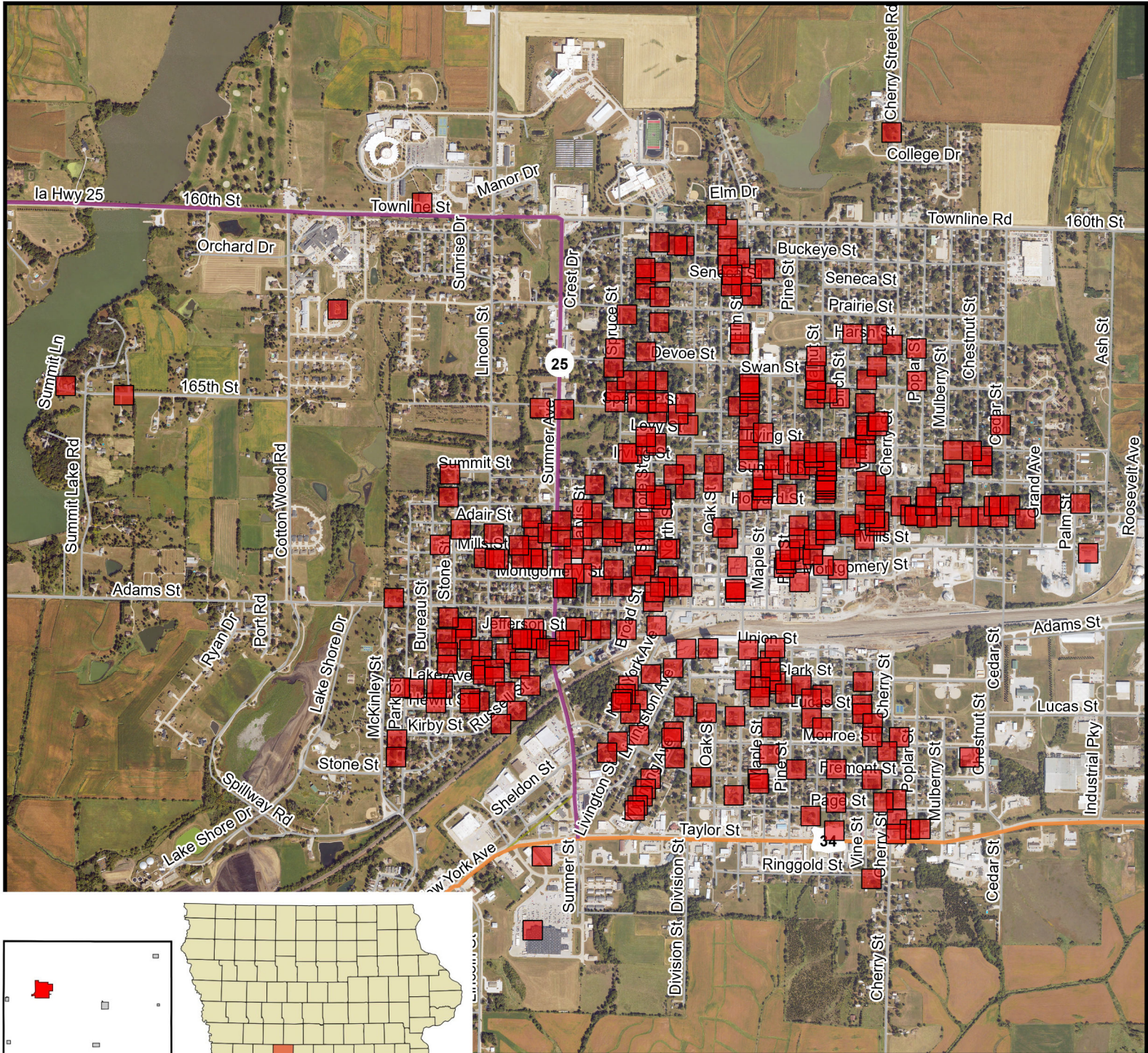
Creston Lead Service Line (LSL) Replacement Project  
Creston, IA (Union County, Iowa)

Legend

 Project Areas

Scale: 1:24,000





**Creston Lead Service Line (LSL) Replacement Project  
Creston, IA (Union County, Iowa)**

Union County. Image source: Wikipedia, 2025.

**Legend**

 Project Areas

Scale: 1:21,659



	ADDRESS	City	State	SERVICE MATERIAL	NOTES
<b>Adair Street</b>					
	902 W Adair	Creston	IA	Lead	Copper?
	903 W Adair	Creston	IA	Lead	GALV
	1104 W Adair	Creston	IA	Lead	GALV
<b>Adams Street</b>					
	525 W Adams	Creston	IA	Lead	
	1405 W Adams	Creston	IA	Lead	GALV
<b>Birch Street</b>					
	307 N Birch	Creston	IA	Lead	Brass? Shared
	307 1/2 N Birch	Creston	IA	Lead	New Service Shared from main
	507 N Birch	Creston	IA	Lead	GALV
	511 N Birch	Creston	IA	Lead	Shared Service w/ 302 E Irving St.
	618 N Birch	Creston	IA	Lead	GALV
	901 N Birch	Creston	IA	Lead	
	510 S Birch	Creston	IA	Lead	GALV
	610 S Birch	Creston	IA	Lead	
	704 S Birch	Creston	IA	Lead	Copper?
<b>Broad Street</b>					
	102 Broad	Creston	IA	Lead	GALV Shared Service w/100 Broad
<b>Buckeye</b>					
	503 W Buckeye	Creston	IA	Lead	
	505 W Buckeye	Creston	IA	Lead	
<b>Cedar Street</b>					
	310 N Cedar	Creston	IA	Lead	
	608 N Cedar	Creston	IA	Lead	Copper?
<b>Cherry Street</b>					
	401 N Cherry	Creston	IA	Lead	GALV
	806 N Cherry	Creston	IA	Lead	
	411 S Cherry	Creston	IA	Lead	Copper?
	502 S Cherry	Creston	IA	Lead	GALV
	609 S Cherry	Creston	IA	Lead	GALV
	610 S Cherry	Creston	IA	Lead	
	705 S Cherry	Creston	IA	Lead	
	1510 N Cherry	Creston	IA	Lead	Poly/Copper
<b>Chestnut</b>					
	311 N Chestnut	Creston	IA	Lead	
	505 N Chestnut	Creston	IA	Lead	Copper?
	509 N Chestnut	Creston	IA	Lead	GALV
	510 N Chestnut	Creston	IA	Lead	Copper?
<b>Clark Street</b>					
	106 W Clark	Creston	IA	Lead	
	104 W Clark	Creston	IA	Lead	
<b>Division Street</b>					
	406 N Division	Creston	IA	Lead	GALV
	308 S Division	Creston	IA	Lead	
	702 N Division	Creston	IA	Lead	Copper? Gravel Alley??
	506 N Division	Creston	IA	Lead	GALV
<b>Elm Street</b>					
	110 N Elm	Creston	IA	Lead	
	110 N Elm	Creston	IA	Lead	112? Also lead
	114 N Elm	Creston	IA	Lead	
	202 N Elm	Creston	IA	Lead	
	403 N Elm	Creston	IA	Lead	GALV/ review location
	505 N Elm	Creston	IA	Lead	GALV
	509 N Elm	Creston	IA	Lead	
	601 N Elm	Creston	IA	Lead	GALV
	609 N Elm	Creston	IA	Lead	
	700 N Elm	Creston	IA	Lead	
	703 N Elm	Creston	IA	Lead	GALV
	709 N Elm	Creston	IA	Lead	Shared
	711 N Elm	Creston	IA	Lead	Shared
	713 N Elm	Creston	IA	Lead	Shared
	806 N Elm	Creston	IA	Lead	GALV
	812 N Elm	Creston	IA	Lead	GALV
	1003 N Elm	Creston	IA	Lead	
	1006 N Elm	Creston	IA	Lead	

	ADDRESS	City	State	SERVICE MATERIAL	NOTES
	1103 N Elm	Creston	IA	Lead	
	1110 N Elm	Creston	IA	Lead	
	301 S Elm	Creston	IA	Lead	GALV
	402 S Elm	Creston	IA	Lead	Copper?
	608 S Elm	Creston	IA	Lead	Copper?
<b>Fremont</b>					
	404 W Fremont	Creston	IA	Lead	Copper?
<b>Hewitt</b>					
	1405 Hewitt	Creston	IA	Lead	
<b>Howard Street</b>					
	504 E Howard	Creston	IA	Lead	
	506 E Howard	Creston	IA	Lead	
	701 E Howard	Creston	IA	Lead	
	706 E Howard	Creston	IA	Lead	
	803 E Howard	Creston	IA	Lead	
	805 E Howard	Creston	IA	Lead	
	901 E Howard	Creston	IA	Lead	GALV
	906 E Howard	Creston	IA	Lead	
	1001 E Howard	Creston	IA	Lead	
	508 W Howard	Creston	IA	Lead	
	509 W Howard	Creston	IA	Lead	Copper?
	609 W Howard	Creston	IA	Lead	Copper?
<b>Irving</b>					
	302 E Irving	Creston	IA	Lead	shared service 511 N Birch
	605 W Irving	Creston	IA	Lead	GALV
	607 W Irving	Creston	IA	Lead	GALV
<b>Jarvis Street</b>					
	304 N Jarvis	Creston	IA	Lead	
	309 N Jarvis	Creston	IA	Lead	
	317 N Jarvis	Creston	IA	Lead	
	318 N Jarvis	Creston	IA	Lead	No Service Shown
	405 N Jarvis	Creston	IA	Lead	Copper?
	111 S Jarvis	Creston	IA	Lead	
<b>Jefferson Street</b>					
	707 W Jefferson	Creston	IA	Lead	Copper?
	803 W Jefferson	Creston	IA	Lead	GALV
	808 W Jefferson	Creston	IA	Lead	
	810 W Jefferson	Creston	IA	Lead	
	904 W Jefferson	Creston	IA	Lead	
	906 W Jefferson	Creston	IA	Lead	
	907 W Jefferson	Creston	IA	Lead	
	908 W Jefferson	Creston	IA	Lead	
	1002 W Jefferson	Creston	IA	Lead	
	1111 W Jefferson	Creston	IA	Lead	
	1203 W Jefferson	Creston	IA	Lead	
	1205 W Jefferson	Creston	IA	Lead	
	1206 W Jefferson	Creston	IA	Lead	GALV
<b>Lake Street</b>					
	1202 Lake	Creston	IA	Lead	GALV
	1206 Lake	Creston	IA	Lead	Copper?
	1304 Lake	Creston	IA	Lead	Copper?
<b>Laurel</b>					
	806 Laurel	Creston	IA	Lead	Copper
<b>Lincoln Street</b>					
	208 N Lincoln	Creston	IA	Lead	2 services/
	305 N Lincoln	Creston	IA	Lead	GALV
	201 S Lincoln	Creston	IA	Lead	
	204 S Lincoln	Creston	IA	Lead	
	209 S Lincoln	Creston	IA	Lead	
	211 S Lincoln	Creston	IA	Lead	Shared
	213 S Lincoln	Creston	IA	Lead	Shared
	223 S Lincoln	Creston	IA	Lead	GALV
	404 S Lincoln	Creston	IA	Lead	Copper? Galv at curb stop to meter?
	406 S Lincoln	Creston	IA	Lead	1693
<b>Livingston</b>					
	304 Livingston	Creston	IA	Lead	Copper?

	ADDRESS	City	State	SERVICE MATERIAL	NOTES
	428 Livingston	Creston	IA	Lead	Copper?
<b>Lucas</b>					
	402 W Lucas	Creston	IA	Lead	GALV
<b>Maple Street</b>					
	402 N Maple	Creston	IA	Lead	GALV AND REVIEW LACATION
	408 N Maple	Creston	IA	Lead	
	410 N Maple	Creston	IA	Lead	
	414 N Maple	Creston	IA	Lead	Copper?
	501 N Maple	Creston	IA	Lead	
	505 N Maple	Creston	IA	Lead	
	602 N Maple	Creston	IA	Lead	GALV
	1102 N Maple	Creston	IA	Lead	Copper?
	207 S Maple	Creston	IA	Lead	2 Services
	208 S Maple	Creston	IA	Lead	Copper?
	211 S Maple	Creston	IA	Lead	
	302 S Maple	Creston	IA	Lead	
	306 S Maple	Creston	IA	Lead	
	405 S Maple	Creston	IA	Lead	
	505 S Maple	Creston	IA	Lead	GALV
	600 S Maple	Creston	IA	Lead	Review
	602 S Maple	Creston	IA	Lead	GALV
<b>Mills Street</b>					
	303 W Mills	Creston	IA	Lead	GAVL/Location
	507 W Mills	Creston	IA	Lead	
	509 W Mills	Creston	IA	Lead	
	600 W Mills	Creston	IA	Lead	
	712 W Mills	Creston	IA	Lead	
	805 W Mills	Creston	IA	Lead	Copper? Galv from curb stop to mete
	812 W Mills	Creston	IA	Lead	
	902 W Mills	Creston	IA	Lead	Shared
	903 W Mills	Creston	IA	Lead	
	904 W Mills	Creston	IA	Lead	Shared
	908 W Mills	Creston	IA	Lead	? Review 2nd service
	909 W Mills	Creston	IA	Lead	GALV
	924 W Mills	Creston	IA	Lead	
	926 W Mills	Creston	IA	Lead	
	1205 W Mills	Creston	IA	Lead	REVIEW
	1100 E Mills	Creston	IA	Lead	
<b>Monroe</b>					
	710 E Monroe	Creston	IA	Lead	Unknown Waste Management
<b>Montgomery Street</b>					
	215 E Montgomery	Creston	IA	Lead	Copper?
	502 W Montgomery	Creston	IA	Lead	
	507 W Montgomery	Creston	IA	Lead	REVIEW shared/505 has GALV
	508 W Montgomery	Creston	IA	Lead	
	512 W Montgomery	Creston	IA	Lead	
	603 W Montgomery	Creston	IA	Lead	
	610 W Montgomery	Creston	IA	Lead	Copper
	704 W Montgomery	Creston	IA	Lead	GALV
	801 W Montgomery	Creston	IA	Lead	
	805 W Montgomery	Creston	IA	Lead	
	806 W Montgomery	Creston	IA	Lead	REVIEW/POLY
	808 W Montgomery	Creston	IA	Lead	
<b>Mulberry</b>					
	310 N Mulberry	Creston	IA	Lead	Copper? Shared w/700 e Howard
	410 N Mulberry	Creston	IA	Lead	Copper?
	501 N Mulberry	Creston	IA	Lead	
	511 N Mulberry	Creston	IA	Lead	GALV
<b>Myrtle Street</b>					
	209 Myrtle	Creston	IA	Lead	GALV
	216 Myrtle	Creston	IA	Lead	
	220 Myrtle	Creston	IA	Lead	
	227 Myrtle	Creston	IA	Lead	
<b>New York Ave</b>					
	110 New York Ave	Creston	IA	Lead	Copper? Galv
	305 New York Ave	Creston	IA	Lead	

	ADDRESS	City	State	SERVICE MATERIAL	NOTES
	404 New York Ave	Creston	IA	Lead	
	407 New York Ave	Creston	IA	Lead	
	408 1/2 New York Ave	Creston	IA	Lead	Copper? Galv
	412 New York Ave	Creston	IA	Lead	
	415 New York Ave	Creston	IA	Lead	
	416 New York Ave	Creston	IA	Lead	
	501 New York Ave	Creston	IA	Lead	Copper? 2 Services review
	509 New York Ave	Creston	IA	Lead	GALV
<b>Oak Street</b>					
	305 1/2 N Oak	Creston	IA	Lead	GALV
	408 N Oak	Creston	IA	Lead	Copper?
	502 N Oak	Creston	IA	Lead	GALV
	1105 N Oak	Creston	IA	Lead	GALV
	1201 N Oak	Creston	IA	Lead	
	1209 N Oak	Creston	IA	Lead	permitt is for 1209 N sycamore
<b>Palm</b>					
	401 Palm	Creston	IA	Lead	
<b>Park</b>					
	400 S Park	Creston	IA	Lead	GALV
	600 S Park	Creston	IA	Lead	Galv
	606 S Park	Creston	IA	Lead	Copper? GALV??
<b>Peterson Street</b>					
	202 S Peterson	Creston	IA	Lead	
	210 S Peterson	Creston	IA	Lead	GALV
	214 Peterson	Creston	IA	Lead	
	221 Peterson	Creston	IA	Lead	GALV
<b>Pine Street</b>					
	129 N Pine	Creston	IA	Lead	
	206 N Pine	Creston	IA	Lead	
	210 N Pine	Creston	IA	Lead	
	217 N Pine	Creston	IA	Lead	
	218 N Pine	Creston	IA	Lead	
	221 N Pine	Creston	IA	Lead	??
	226 N Pine	Creston	IA	Lead	Copper?
	301 N Pine	Creston	IA	Lead	Abandoned lead review
	307 N Pine	Creston	IA	Lead	
	404 N Pine	Creston	IA	Lead	GALV
	501 N Pine	Creston	IA	Lead	GALV
	503 N Pine	Creston	IA	Lead	GALV
	504 N Pine	Creston	IA	Lead	GALV
	509 1/2 N Pine	Creston	IA	Lead	
	312 S Pine	Creston	IA	Lead	
	303 S Pine	Creston	IA	Lead	GALV
	511 S Pine	Creston	IA	Lead	GALV
<b>Poplar</b>					
	311 N Poplar	Creston	IA	Lead	
	401 N Poplar	Creston	IA	Lead	
	405 N Poplar	Creston	IA	Lead	GALV
	700 N Poplar	Creston	IA	Lead	GALV
	804 N Poplar	Creston	IA	Lead	GALV
	708 S Poplar	Creston	IA	Lead	GALV
	709 S Poplar	Creston	IA	Lead	GALV
<b>Prairie</b>					
	1709 W Prairie	Creston	IA	Lead	C900/DI??
<b>Ringgold</b>					
	400 E Ringgold	Creston	IA	Lead	Copper? Galv from curb stop to hous
<b>Russell</b>					
	316 Russell	Creston	IA	Lead	GALV
	400 Russell	Creston	IA	Lead	GALV
<b>Seneca Street</b>					
	304 W Seneca	Creston	IA	Lead	
	305 W Seneca	Creston	IA	Lead	Copper? Lead from Main to curb stop
<b>Spartan Hall</b>					
	Spartan Hall	Creston	IA	Lead	Unknown
<b>Spencer</b>					
	502 W Spencer	Creston	IA	Lead	

	ADDRESS	City	State	SERVICE MATERIAL	NOTES
	503 W Spencer	Creston	IA	Lead	Copper?
	601 W Spencer	Creston	IA	Lead	GALV
	710 W Spencer	Creston	IA	Lead	GALV
<b>Spruce Street</b>					
	204 N Spruce	Creston	IA	Lead	Shared with 701 W Montgomery
	302 N Spruce	Creston	IA	Lead	GALV
	303 N Spruce	Creston	IA	Lead	GALV
	306 N Spruce	Creston	IA	Lead	Copper? Unknown from curb stop to
	800 N Spruce	Creston	IA	Lead	GALV
	806 N Spruce	Creston	IA	Lead	GALV
	807 N Spruce	Creston	IA	Lead	Galv
	814 N Spruce	Creston	IA	Lead	unknwn after curb stop
	902 N Spruce	Creston	IA	Lead	Copper? Galv after curb stop??
	915 N Spruce	Creston	IA	Lead	GALV
<b>Stone Street</b>					
	102 S Stone	Creston	IA	Lead	
	200 S Stone	Creston	IA	Lead	
	204 S Stone	Creston	IA	Lead	
	300 S Stone	Creston	IA	Lead	
	500 N Stone	Creston	IA	Lead	GALV
	510 N Stone	Creston	IA	Lead	
<b>Summit</b>					
	503 W Summit	Creston	IA	Lead	GALV
<b>Sumner Street</b>					
	304 N Sumner	Creston	IA	Lead	GALV
	305 N Sumner	Creston	IA	Lead	GALV
	313 N Sumner	Creston	IA	Lead	GALV
	710 N Sumner	Creston	IA	Lead	Copper? Disconnected
	202 S Sumner	Creston	IA	Lead	GALV
	203 S Sumner	Creston	IA	Lead	GALV
	205 S Sumner	Creston	IA	Lead	GALV
<b>Sycamore Street</b>					
	105 N Sycamore	Creston	IA	Lead	
	204 N Sycamore	Creston	IA	Lead	
	306 N Sycamore	Creston	IA	Lead	
	308 N Sycamore	Creston	IA	Lead	
	312 N Sycamore	Creston	IA	Lead	
	400 N Sycamore	Creston	IA	Lead	GALV
	403 N Sycamore	Creston	IA	Lead	
	408 N Sycamore	Creston	IA	Lead	GALV
	604 N Sycamore	Creston	IA	Lead	
	605 N Sycamore	Creston	IA	Lead	
	608 N Sycamore	Creston	IA	Lead	
	709 N Sycamore	Creston	IA	Lead	GALV
	800 N Sycamore	Creston	IA	Lead	GALV
	801 N Sycamore	Creston	IA	Lead	
	806 N Sycamore	Creston	IA	Lead	
	809 N Sycamore	Creston	IA	Lead	Copper?
	810 N Sycamore	Creston	IA	Lead	
	900 N Sycamore	Creston	IA	Lead	
	907 1/2 N Sycamore	Creston	IA	Lead	
	1002 N Sycamore	Creston	IA	Lead	
	1003 N Sycamore	Creston	IA	Lead	
	1100 N Sycamore	Creston	IA	Lead	
	1101 N Sycamore	Creston	IA	Lead	
	1102 N Sycamore	Creston	IA	Lead	GALV
	1203 N Sycamore	Creston	IA	Lead	Copper? Shows 2 services (1 is lead)
<b>Taylor Street</b>					
	501 E Taylor	Creston	IA	Lead	Copper?
	804 W Taylor	Creston	IA	Lead	2" Copper?
<b>Townline</b>					
	401 W Townline	Creston	IA	Lead	GALV
<b>Union Street</b>					
	112 W Union	Creston	IA	Lead	
	216 W Union	Creston	IA	Lead	Possibe wrong address 214??
	402 W Union	Creston	IA	Lead	GALV

	ADDRESS	City	State	SERVICE MATERIAL	NOTES
	501 W Union	Creston	IA	Lead	
<b>Vine Street</b>					
	300 N Vine	Creston	IA	Lead	
	307 N Vine	Creston	IA	Lead	
	309 N Vine	Creston	IA	Lead	
	311 N Vine	Creston	IA	Lead	
	312 N Vine	Creston	IA	Lead	
	403 N Vine	Creston	IA	Lead	Shared
	405 N Vine	Creston	IA	Lead	Shared
	409 N Vine	Creston	IA	Lead	
	410 N Vine	Creston	IA	Lead	GALV
	508 N Vine	Creston	IA	Lead	2 Services both Lead
	602 N Vine	Creston	IA	Lead	
	604 N Vine	Creston	IA	Lead	
	606 N Vine	Creston	IA	Lead	2 Services
	607 N Vine	Creston	IA	Lead	
	609 N Vine	Creston	IA	Lead	Copper? Galv from curbstop to meter
	616 N Vine	Creston	IA	Lead	
	700 N Vine	Creston	IA	Lead	
	707 N Vine	Creston	IA	Lead	
	901 N Vine	Creston	IA	Lead	Copper/ Lead at main
	300 S Vine	Creston	IA	Lead	
	310 S Vine	Creston	IA	Lead	
	400 S Vine	Creston	IA	Lead	
	405 S Vine	Creston	IA	Lead	
	411 S Vine	Creston	IA	Lead	Copper? Permit lead from main to stop box
	601 S Vine	Creston	IA	Lead	Copper? Galv after stop box
<b>Walnut Street</b>					
	205 N Walnut	Creston	IA	Lead	GALV
	216 N Walnut	Creston	IA	Lead	
	300 N Walnut	Creston	IA	Lead	GALV
	303 N Walnut	Creston	IA	Lead	
	305 N Walnut	Creston	IA	Lead	
	309 N Walnut	Creston	IA	Lead	
	405 N Walnut	Creston	IA	Lead	
	407 N Walnut	Creston	IA	Lead	
	409 N Walnut	Creston	IA	Lead	Copper? Galv after stop box
	409 1/2 N Walnut	Creston	IA	Lead	GALV
	411 N Walnut	Creston	IA	Lead	
	501 N Walnut	Creston	IA	Lead	GALV
	502 N Walnut	Creston	IA	Lead	
	503 N Walnut	Creston	IA	Lead	
	505 N Walnut	Creston	IA	Lead	
	506 N Walnut	Creston	IA	Lead	
	508 N Walnut	Creston	IA	Lead	GALV
	509 N Walnut	Creston	IA	Lead	
	616 N Walnut	Creston	IA	Lead	Copper meter pit
	617 N Walnut	Creston	IA	Lead	GALV
	620 N Walnut	Creston	IA	Lead	
	700 N Walnut	Creston	IA	Lead	GALV
	704 N Walnut	Creston	IA	Lead	
	800 N Walnut	Creston	IA	Lead	Copper? Galv after stop box
	315 S Walnut	Creston	IA	Lead	
	316 S Walnut	Creston	IA	Lead	GALV
	402 S Walnut	Creston	IA	Lead	GALV
	407 S Walnut	Creston	IA	Lead	
	702 S Walnut	Creston	IA	Lead	GALV
<b>Wyoming</b>					
	418 Wyoming	Creston	IA	Lead	
	422 Wyoming	Creston	IA	Lead	
	435 Wyoming Ave	Creston	IA	Lead	
	510 Wyoming	Creston	IA	Lead	GALV
	516 Wyoming	Creston	IA	Lead	
	520 Wyoming	Creston	IA	Lead	
	600 Wyoming	Creston	IA	Lead	Copper? Unknown after stop box
	602 Wyoming	Creston	IA	Lead	GALV

	ADDRESS	City	State	SERVICE MATERIAL	NOTES
165th					
	1389 165th	Creston	IA	Lead	Poly???
	1393 165th	Creston	IA	Lead	Poly???