

**Why You Should Read This:** The document below reviews the environmental impact likely from a State Revolving Fund project. As part of the environmental review, you are entitled to provide comments. If you have concerns about the environmental impact of this project, raise them now. We encourage public input in this decision-making process.



**IOWA STATE REVOLVING FUND**  
**CATEGORICAL EXCLUSION**

March 25, 2026

**To: All Interested Citizens, Government Agencies, and Public Groups**

An environmental review has been performed based on the procedures for implementing the National Environmental Policy Act (NEPA), for the proposed agency action below:

**Applicant:** City of Correctionville

**SRF Number:** FS-97-26-DWSRF-022

**County:** Woodbury

**Iowa DNR Project Number:** W2025-0461

**State:** Iowa

Correctionville Lead Service Line Replacement

The City of Correctionville, Iowa is planning an upgrade to their drinking water infrastructure. The city has applied for financial assistance through the State Revolving Fund (SRF) loan program to build the project. SRF is a program authorized by the Environmental Protection Agency (EPA) and administered by the Iowa Department of Natural Resources (DNR) in partnership with the Iowa Finance Authority.

The proposed project includes the replacement of lead or galvanized steel service lines between the municipal water main and the home/business. This project includes 172 addresses whose service lines may be lead or galvanized steel based on current information and need to be replaced and a few which need to be disconnected from the system. Only those lines confirmed to be lead or galvanized steel will be included in this replacement project.

The proposed project was reviewed for eligibility for a categorical exclusion from NEPA review specified in the 40 CFR (Code of Federal Regulations) Part 6.204. The project meets all criteria described in the above reference and was determined that this project is eligible for a categorical exclusion. Consequently, a preliminary decision has been made that a Finding of No Significant Impact (FNSI) will not be prepared.

Justification for granting categorical exclusion:

- The project as proposed is solely directed toward minor upgrading or minor expansion of system capacity, rehabilitation of the existing system and system components, or construction of new minor ancillary facilities adjacent to or on the same property as existing facilities.
- This project will not involve new or relocated discharges to surface or ground water.
- This project will not result in substantial increase in the volume or the loading of pollutant to the receiving water.

- The project will not serve a population 30% greater than the existing population.
- The project is not directly or indirectly involved or related to upgrading or extending infrastructure systems primarily for the purposes of future development.
- The project is not counter to the state, or other regional growth plan or strategy.
- The proposed action is not known or expected to have potentially significant environmental impacts on the quality of the human environment either individually or cumulatively over time.
- The proposed action is not known or expected to have disproportionately high and adverse human health or environmental effects on any community, including minority communities, low-income communities, or federally-recognized Indian tribal communities.
- The proposed action is not known or expected to significantly affect federally listed threatened or endangered species or their critical habitat.
- The proposed action is not known or expected to significantly affect national natural landmarks or any property with nationally significant historic, architectural, prehistoric, archeological, or cultural value, including but not limited to, property listed on or eligible for the National Register of Historic Places.
- The proposed action is not known or expected to significantly affect environmentally important natural resource areas such as wetlands, floodplains, significant agricultural lands, aquifer recharge zones, coastal zones, barrier islands, wild and scenic rivers, and significant fish or wildlife habitat.
- The proposed action is not known or expected to cause significant adverse air quality effects.
- The proposed action is not known or expected to have a significant effect on the pattern and type of land use (industrial, commercial, agricultural, recreational, residential) or growth and distribution of population including altering the character of existing residential areas, or may not be consistent with state or local government, or federally-recognized Indian tribe approved land use plans or federal land management plans.
- The proposed action is not known or expected to cause significant public controversy about a potential environmental impact of the proposed action.
- The proposed action is not known or expected to be associated with providing financial assistance to a federal agency through an interagency agreement for a project that is known or expected to have potentially significant environmental impacts.
- The proposed action is not known or expected to conflict with federal, state or local government, or federally-recognized Indian tribe environmental, resource-protection, or land-use laws or regulations.

The Department of Natural Resources shall revoke the categorical exclusion and shall require a full environmental review if, subsequent to the granting of an exclusion, the state determines that:

- The proposed project no longer meets the requirements for a categorical exclusion due to changes in the proposed project; or
- New evidence reveals that serious local or environmental issues exist; or
- Federal, State, local or tribal laws are being violated.

This action is taken on the basis of a careful review of supporting information that is on file at the Department of Natural Resources' Des Moines, Iowa office. This information is available upon request. This Department will not take any administrative action on the project for at least thirty (30) calendar days from the above date. Persons disagreeing with the above environmental decision may submit comments to the Department during this period. Your comments can be sent to [SRF-PC@dnr.iowa.gov](mailto:SRF-PC@dnr.iowa.gov) or directly to me at [Hailey.Andersen@dnr.iowa.gov](mailto:Hailey.Andersen@dnr.iowa.gov) or (515) 321-7385.

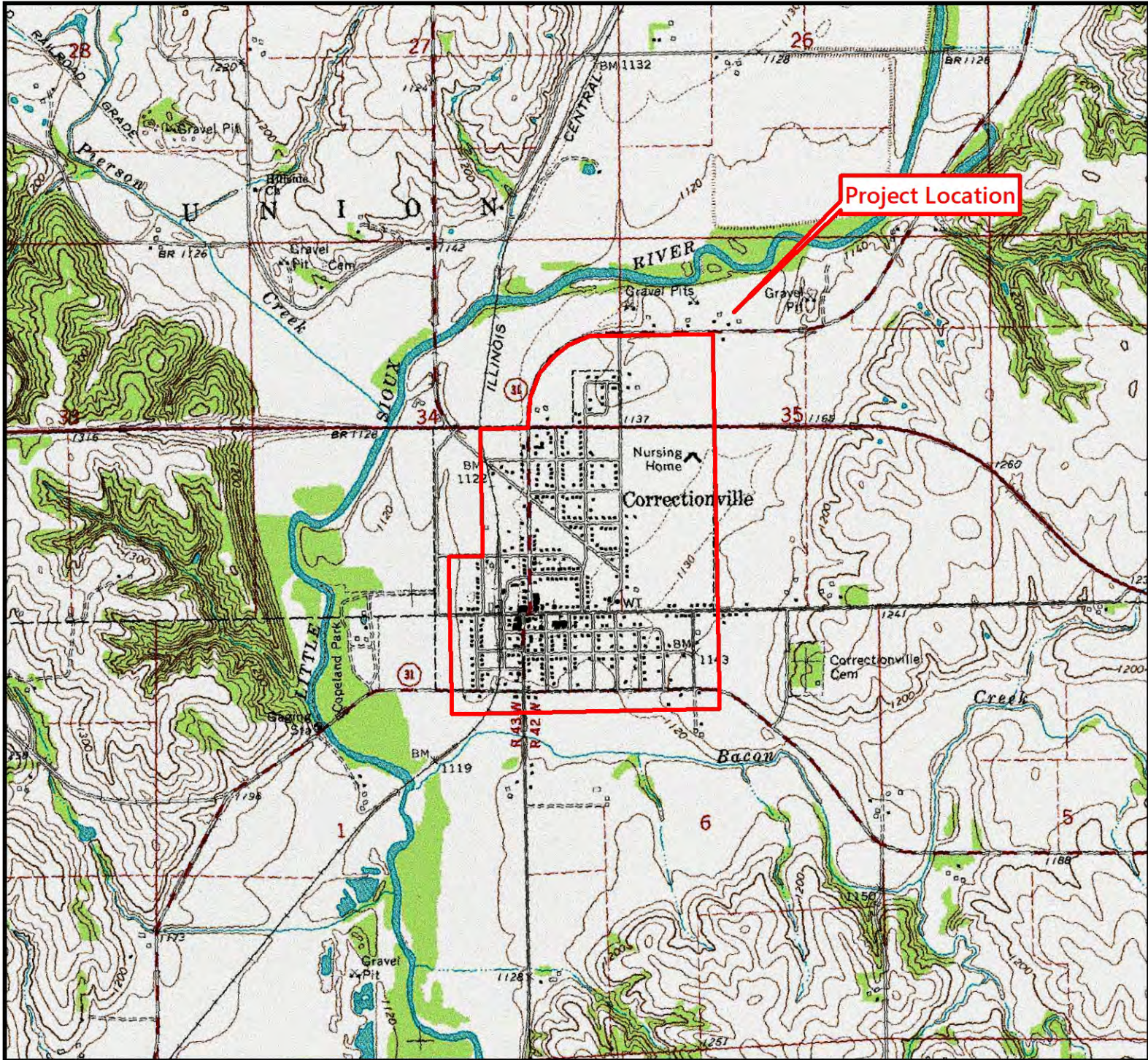
Sincerely,

Hailey Andersen  
Environmental Review Specialist  
6200 Park Ave, Suite 200  
Des Moines, IA 50321

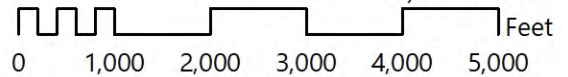
Enclosure: Project Map  
LSL Address List

Distribution

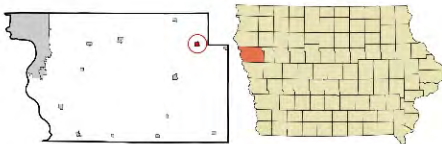
List (email): ISG, Inc.  
Edward Boling, Council on Environmental Quality  
Jake Hansen, Iowa Department of Agriculture and Land Stewardship  
Ken Sharp, Iowa Department of Health & Human Services  
Mindy Wells, Iowa Department of Health & Human Services  
Chad Sands, Iowa Economic Development Authority  
Alicia Vasto, Iowa Environmental Council  
Michael Schmidt, Iowa Environmental Council  
Tony Toigo, Iowa Finance Authority  
Lee Wagner, Iowa Finance Authority  
Yolanda Attaway, Iowa Finance Authority  
Mickey Shields, Iowa League of Cities  
Jane Clark, Sierra Club  
Josh Mandelbaum, Environmental Law and Policy Center  
Kate Sand, USDA Rural Development  
Tokey Boswell, USDO, National Park Service, Midwest Region  
Kraig McPeck, Fish and Wildlife Service, Rock Island Field Office  
Ann D'Alfonso, USEPA Region VII  
The Record



1 inch = 2,000 feet



USGS 7.5 Minute Quadrangle: Correctionville  
Section: 06; Township: 88N; Range: 42W  
Section: 01; Township: 88N; Range: 43W  
Section: 34, 35; Township: 89N; Range: 42W  
Date: 1969



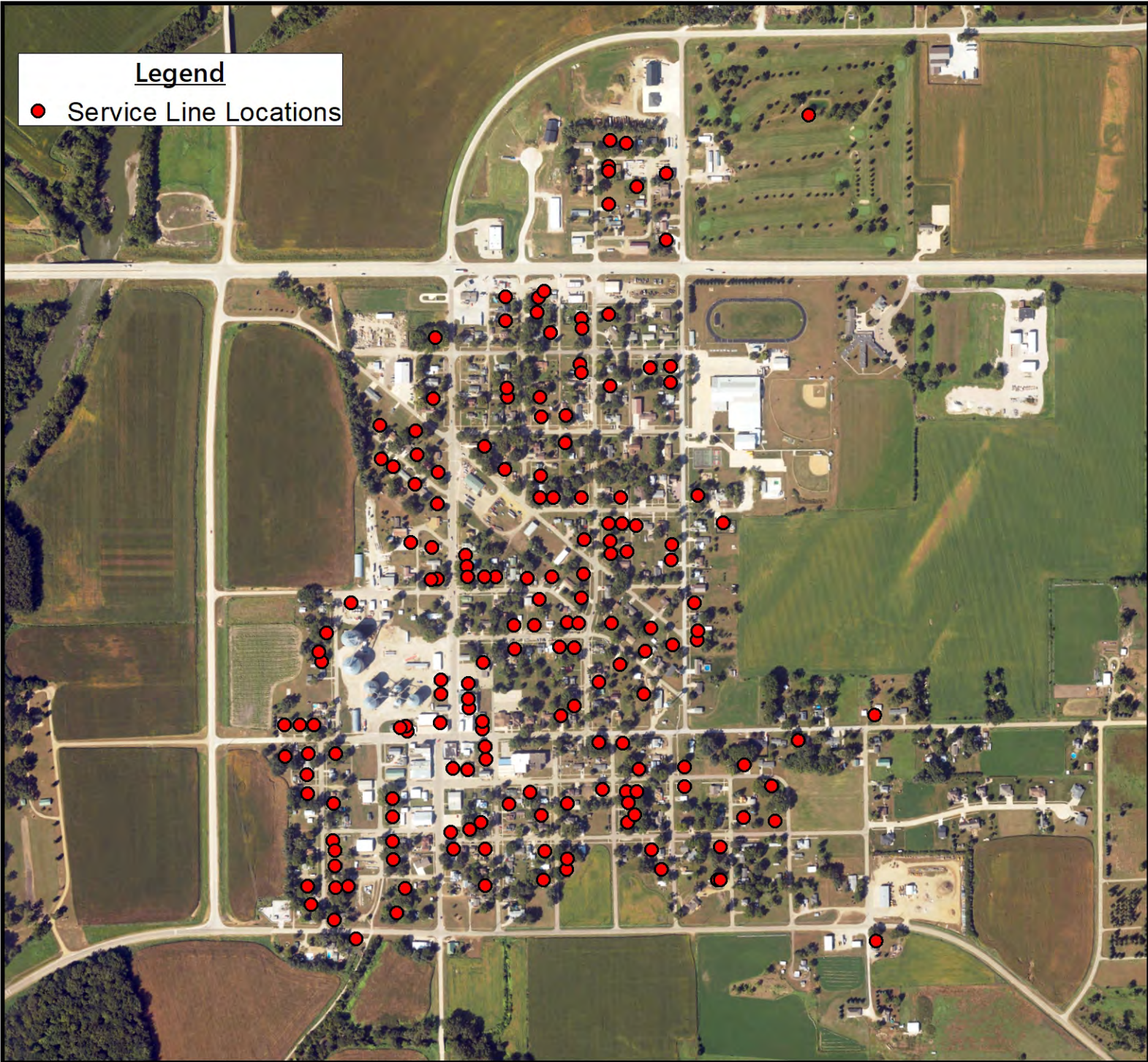
# Aerial Photograph

Lead Service Line Replacement Project  
Correctionville, Iowa

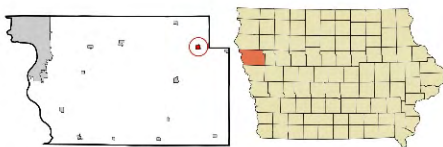
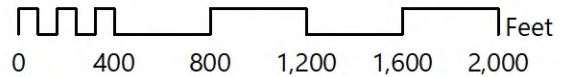


**Legend**

● Service Line Locations



1 inch = 800 feet



USGS 7.5 Minute Quadrangle: Correctionville  
Section: 06; Township: 88N; Range: 42W  
Section: 01; Township: 88N; Range: 43W  
Section: 34, 35; Township: 89N; Range: 42W  
Date: 09.07.2025

Street	City	Sta	Zip Code
511 10TH ST	CORRECTIONVILLE	IA	51016
702 10TH ST	CORRECTIONVILLE	IA	51016
508 11TH ST	CORRECTIONVILLE	IA	51016
605 13TH ST	CORRECTIONVILLE	IA	51016
615 13TH ST	CORRECTIONVILLE	IA	51016
4184 160TH ST	CORRECTIONVILLE	IA	51016
4250 160TH ST	CORRECTIONVILLE	IA	51016
203 1ST ST	CORRECTIONVILLE	IA	51016
203 2ND ST	CORRECTIONVILLE	IA	51016
208 2ND ST	CORRECTIONVILLE	IA	51016
303 2ND ST	CORRECTIONVILLE	IA	51016
304 2ND ST	CORRECTIONVILLE	IA	51016
302 3RD ST	CORRECTIONVILLE	IA	51016
303 3RD ST	CORRECTIONVILLE	IA	51016
403 3RD ST	CORRECTIONVILLE	IA	51016
413 3RD ST	CORRECTIONVILLE	IA	51016
516 3RD ST	CORRECTIONVILLE	IA	51016
603 3RD ST	CORRECTIONVILLE	IA	51016
716 3RD ST	CORRECTIONVILLE	IA	51016
915 3RD ST	CORRECTIONVILLE	IA	51016
413 4TH ST	CORRECTIONVILLE	IA	51016
512 4TH ST	CORRECTIONVILLE	IA	51016
616 4TH ST	CORRECTIONVILLE	IA	51016
707 4TH ST	CORRECTIONVILLE	IA	51016
708 4TH ST	CORRECTIONVILLE	IA	51016
803 4TH ST	CORRECTIONVILLE	IA	51016
901 4TH ST	CORRECTIONVILLE	IA	51016
914 4TH ST	CORRECTIONVILLE	IA	51016
114 5TH ST	CORRECTIONVILLE	IA	51016
115 5TH ST	CORRECTIONVILLE	IA	51016
123 5TH ST	CORRECTIONVILLE	IA	51016
129 5TH ST	CORRECTIONVILLE	IA	51016
202 5TH ST	CORRECTIONVILLE	IA	51016
305 5TH ST	CORRECTIONVILLE	IA	51016
307 5TH ST	CORRECTIONVILLE	IA	51016
309 5TH ST	CORRECTIONVILLE	IA	51016
325 5TH ST	CORRECTIONVILLE	IA	51016
403 5TH ST	CORRECTIONVILLE	IA	51016
411 5TH ST	CORRECTIONVILLE	IA	51016
418 5TH ST	CORRECTIONVILLE	IA	51016
517 5TH ST	CORRECTIONVILLE	IA	51016
616 5TH ST	CORRECTIONVILLE	IA	51016
623 5TH ST	CORRECTIONVILLE	IA	51016
702 5TH ST	CORRECTIONVILLE	IA	51016
1002 5TH ST	CORRECTIONVILLE	IA	51016
1103 5TH ST	CORRECTIONVILLE	IA	51016
412 6TH ST	CORRECTIONVILLE	IA	51016
425 6TH ST	CORRECTIONVILLE	IA	51016

426 6TH ST	CORRECTIONVILLE	IA	51016
503 6TH ST	CORRECTIONVILLE	IA	51016
512 6TH ST	CORRECTIONVILLE	IA	51016
517 6TH ST	CORRECTIONVILLE	IA	51016
521 6TH ST	CORRECTIONVILLE	IA	51016
206 7TH ST	CORRECTIONVILLE	IA	51016
305 7TH ST	CORRECTIONVILLE	IA	51016
413 7TH ST	CORRECTIONVILLE	IA	51016
421 7TH ST	CORRECTIONVILLE	IA	51016
502 7TH ST	CORRECTIONVILLE	IA	51016
503 7TH ST	CORRECTIONVILLE	IA	51016
511 8TH ST	CORRECTIONVILLE	IA	51016
521 8TH ST	CORRECTIONVILLE	IA	51016
616 8TH ST	CORRECTIONVILLE	IA	51016
617 8TH ST	CORRECTIONVILLE	IA	51016
622 8TH ST	CORRECTIONVILLE	IA	51016
710 8TH ST	CORRECTIONVILLE	IA	51016
816 8TH ST	CORRECTIONVILLE	IA	51016
412 9TH ST	CORRECTIONVILLE	IA	51016
505 9TH ST	CORRECTIONVILLE	IA	51016
515 9TH ST	CORRECTIONVILLE	IA	51016
516 9TH ST	CORRECTIONVILLE	IA	51016
109 BIRCH ST	CORRECTIONVILLE	IA	51016
116 BIRCH ST	CORRECTIONVILLE	IA	51016
117 BIRCH ST	CORRECTIONVILLE	IA	51016
208 BIRCH ST	CORRECTIONVILLE	IA	51016
212 BIRCH ST	CORRECTIONVILLE	IA	51016
308 BIRCH ST	CORRECTIONVILLE	IA	51016
313 BIRCH ST	CORRECTIONVILLE	IA	51016
403 BIRCH ST	CORRECTIONVILLE	IA	51016
413 BIRCH ST	CORRECTIONVILLE	IA	51016
535 BIRCH ST	CORRECTIONVILLE	IA	51016
539 BIRCH ST	CORRECTIONVILLE	IA	51016
603 BIRCH ST	CORRECTIONVILLE	IA	51016
104 CEDAR ST	CORRECTIONVILLE	IA	51016
312 CEDAR ST	CORRECTIONVILLE	IA	51016
216 DRIFTWOOD ST	CORRECTIONVILLE	IA	51016
402 DRIFTWOOD ST	CORRECTIONVILLE	IA	51016
514 DRIFTWOOD ST	CORRECTIONVILLE	IA	51016
517 DRIFTWOOD ST	CORRECTIONVILLE	IA	51016
520 DRIFTWOOD ST	CORRECTIONVILLE	IA	51016
523 DRIFTWOOD ST	CORRECTIONVILLE	IA	51016
526 DRIFTWOOD ST	CORRECTIONVILLE	IA	51016
706 DRIFTWOOD ST	CORRECTIONVILLE	IA	51016
707 DRIFTWOOD ST	CORRECTIONVILLE	IA	51016
714 DRIFTWOOD ST	CORRECTIONVILLE	IA	51016
718 DRIFTWOOD ST	CORRECTIONVILLE	IA	51016
719 DRIFTWOOD ST	CORRECTIONVILLE	IA	51016
801 DRIFTWOOD ST	CORRECTIONVILLE	IA	51016

811 DRIFTWOOD ST	CORRECTIONVILLE	IA	51016
911 DRIFTWOOD ST	CORRECTIONVILLE	IA	51016
1007 DRIFTWOOD ST	CORRECTIONVILLE	IA	51016
203 ELM ST	CORRECTIONVILLE	IA	51016
217 ELM ST	CORRECTIONVILLE	IA	51016
307 ELM ST	CORRECTIONVILLE	IA	51016
312 ELM ST	CORRECTIONVILLE	IA	51016
409 ELM ST	CORRECTIONVILLE	IA	51016
804 ELM ST	CORRECTIONVILLE	IA	51016
808 ELM ST	CORRECTIONVILLE	IA	51016
910 ELM ST	CORRECTIONVILLE	IA	51016
911 ELM ST	CORRECTIONVILLE	IA	51016
917 ELM ST	CORRECTIONVILLE	IA	51016
1011 ELM ST	CORRECTIONVILLE	IA	51016
1016 ELM ST	CORRECTIONVILLE	IA	51016
1020 ELM ST	CORRECTIONVILLE	IA	51016
1021 ELM ST	CORRECTIONVILLE	IA	51016
205 FIR ST	CORRECTIONVILLE	IA	51016
206 FIR ST	CORRECTIONVILLE	IA	51016
210 FIR ST	CORRECTIONVILLE	IA	51016
307 FIR ST	CORRECTIONVILLE	IA	51016
310 FIR ST	CORRECTIONVILLE	IA	51016
511 FIR ST	CORRECTIONVILLE	IA	51016
520 FIR ST	CORRECTIONVILLE	IA	51016
537 FIR ST	CORRECTIONVILLE	IA	51016
619 FIR ST	CORRECTIONVILLE	IA	51016
705 FIR ST	CORRECTIONVILLE	IA	51016
716 FIR ST	CORRECTIONVILLE	IA	51016
725 FIR ST	CORRECTIONVILLE	IA	51016
726 FIR ST	CORRECTIONVILLE	IA	51016
732 FIR ST	CORRECTIONVILLE	IA	51016
916 FIR ST	CORRECTIONVILLE	IA	51016
921 FIR ST	CORRECTIONVILLE	IA	51016
925 FIR ST	CORRECTIONVILLE	IA	51016
1007 FIR ST	CORRECTIONVILLE	IA	51016
1011 FIR ST	CORRECTIONVILLE	IA	51016
1016 FIR ST	CORRECTIONVILLE	IA	51016
1212 FIR ST	CORRECTIONVILLE	IA	51016
1220 FIR ST	CORRECTIONVILLE	IA	51016
1230 FIR ST	CORRECTIONVILLE	IA	51016
306 GUMWOOD ST	CORRECTIONVILLE	IA	51016
310 GUMWOOD ST	CORRECTIONVILLE	IA	51016
316 GUMWOOD ST	CORRECTIONVILLE	IA	51016
1219 GUMWOOD ST	CORRECTIONVILLE	IA	51016
211 HACKBERRY ST	CORRECTIONVILLE	IA	51016
316 HACKBERRY ST	CORRECTIONVILLE	IA	51016
532 HACKBERRY ST	CORRECTIONVILLE	IA	51016
533 HACKBERRY ST	CORRECTIONVILLE	IA	51016
540 HACKBERRY ST	CORRECTIONVILLE	IA	51016

610 HACKBERRY ST	CORRECTIONVILLE	IA	51016
715 HACKBERRY ST	CORRECTIONVILLE	IA	51016
806 HACKBERRY ST	CORRECTIONVILLE	IA	51016
919 HACKBERRY ST	CORRECTIONVILLE	IA	51016
925 HACKBERRY ST	CORRECTIONVILLE	IA	51016
1105 HACKBERRY ST	CORRECTIONVILLE	IA	51016
1229 HACKBERRY ST	CORRECTIONVILLE	IA	51016
1300 HACKBERRY ST	CORRECTIONVILLE	IA	51016
215 HAVEN AVE	CORRECTIONVILLE	IA	51016
218 HAVEN AVE	CORRECTIONVILLE	IA	51016
302 HAVEN AVE	CORRECTIONVILLE	IA	51016
309 HAVEN AVE	CORRECTIONVILLE	IA	51016
312 HAVEN AVE	CORRECTIONVILLE	IA	51016
203 IRONWOOD ST	CORRECTIONVILLE	IA	51016
213 IRONWOOD ST	CORRECTIONVILLE	IA	51016
217 IRONWOOD ST	CORRECTIONVILLE	IA	51016
304 IRONWOOD ST	CORRECTIONVILLE	IA	51016
312 MEADOW AVE	CORRECTIONVILLE	IA	51016
511 RAILROAD AVE	CORRECTIONVILLE	IA	51016
605 RAILROAD AVE	CORRECTIONVILLE	IA	51016
612 RAILROAD AVE	CORRECTIONVILLE	IA	51016
621 RAILROAD AVE	CORRECTIONVILLE	IA	51016
316 SIOUX AVE	CORRECTIONVILLE	IA	51016
425 SIOUX AVE	CORRECTIONVILLE	IA	51016
615 SIOUX AVE	CORRECTIONVILLE	IA	51016
702 SIOUX AVE	CORRECTIONVILLE	IA	51016