

**Why You Should Read This:** The document below reviews the environmental impact likely from a State Revolving Fund project. As part of the environmental review, you are entitled to provide comments. If you have concerns about the environmental impact of this project, raise them now. We encourage public input in this decision-making process.



**IOWA STATE REVOLVING FUND**  
**REAFFIRMATION OF A FINDING OF NO SIGNIFICANT IMPACT**

March 6, 2026

**To: All Interested Citizens, Government Agencies, and Public Groups**

An environmental review has been performed based on the procedures for implementing the National Environmental Policy Act (NEPA), for the proposed agency action below:

**Applicant:** City of Sioux City

**SRF Number:** CS1921120 01

**County:** Woodbury

**Iowa DNR Project Number:** W2022-0376A

**State:** Iowa

Sioux City Lift Station Odor Control - Floyd Lift Station Improvements Reaffirmation

The purpose of this letter is to provide you with a State Revolving Fund (SRF) status update. This project has previously been reviewed by the DNR and a Finding of No Significant Impact (FNSI) was issued on December 19, 2024. This project will not be receiving federal funds through SRF.

DNR received a request to add the following location to the project area: addition area to the northwest of the original project area. DNR has determined that the additional scope/location will result in no significant environmental impact as outlined in 40 CFR Part 6.

The FNSI is hereby Reaffirmed including the additional project area. This action is taken on the basis of a careful review of the engineering report, the environmental assessment and other supporting data which are on file at the Department of Natural Resources' office in Des Moines, Iowa. These are available for public review upon request. This Department will not take any administrative action on the project for at least thirty (30) calendar days from the above date. Persons disagreeing with the above environmental decision may submit comments to the department during this period. Your comments can be sent to [SRF-PC@dnr.iowa.gov](mailto:SRF-PC@dnr.iowa.gov) or directly to me at [Hailey.Andersen@dnr.iowa.gov](mailto:Hailey.Andersen@dnr.iowa.gov) or (515) 321-7385

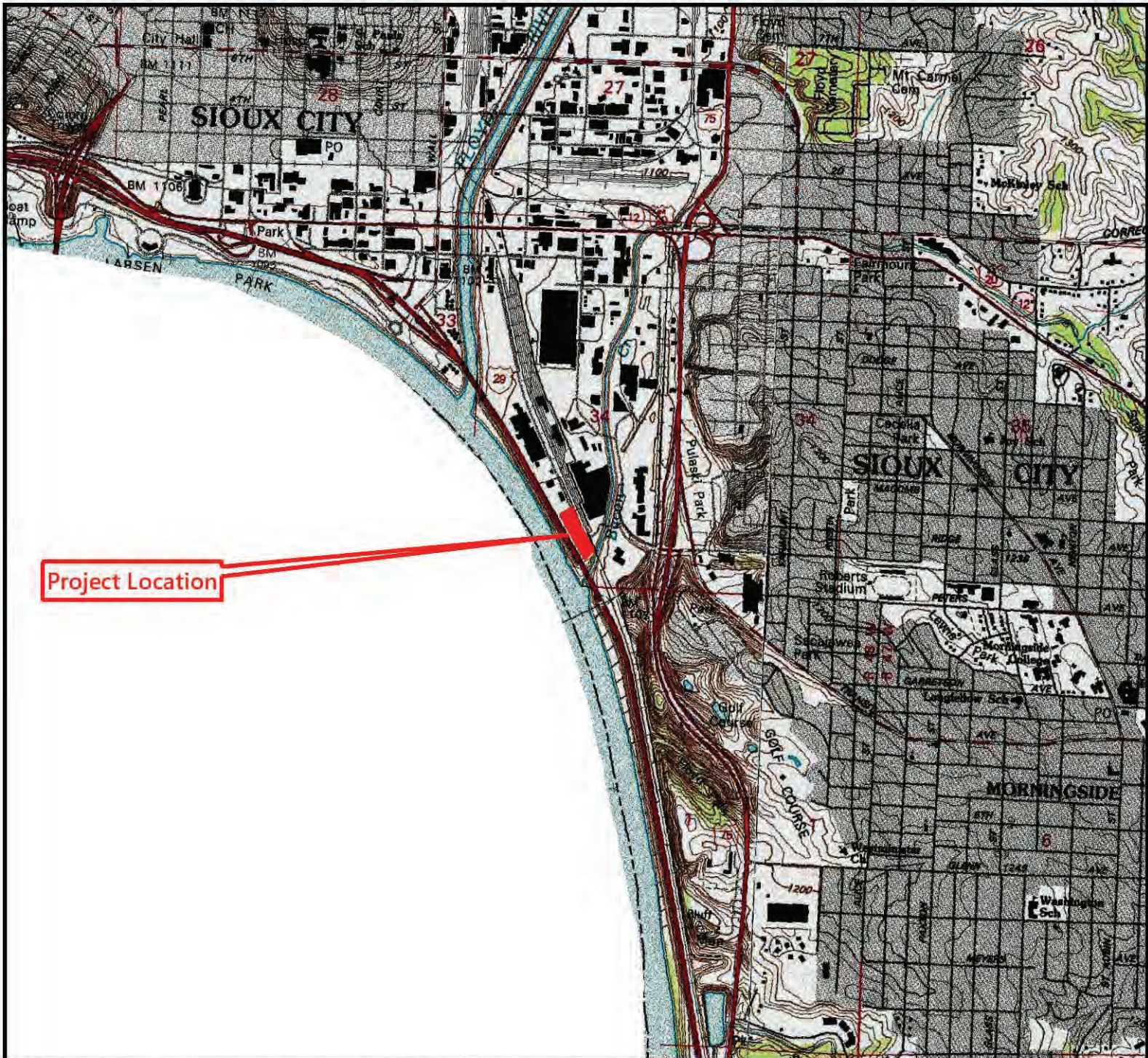
Sincerely,

Hailey Andersen  
Environmental Specialist  
6200 Park Ave, Suite 200  
Des Moines, IA 50321

Enclosure: Project Map

Distribution

List (email): Hazen and Sawyer  
McClure Revision  
Edward Boling, Council on Environmental Quality  
Jake Hansen, Iowa Department of Agriculture and Land Stewardship  
Ken Sharp, Ken Sharp, Iowa Department of Health & Human Services  
Mindy Wells, Iowa Department of Health & Human Services  
Chad Sands, Iowa Economic Development Authority  
Michael Schmidt, Iowa Environmental Council  
Tony Toigo, Iowa Finance Authority  
Lee Wagner, Iowa Finance Authority  
Yolanda Attaway, Iowa Finance Authority  
Mickey Shields, Iowa League of Cities  
Jane Clark, Sierra Club  
Josh Mandelbaum, Environmental Law and Policy Center  
Kate Sand, USDA Rural Development  
Tokey Boswell, USDOI, National Park Service, Midwest Region  
Kraig McPeck, Fish and Wildlife Service, Rock Island Field Office  
Ann D'Alfonso, USEPA Region VII  
Sioux City Journal



Project Location

## Lift Station Odor Control - Floyd Lift Station Improvements Reaffirmation Sioux City, Iowa (Woodbury County)

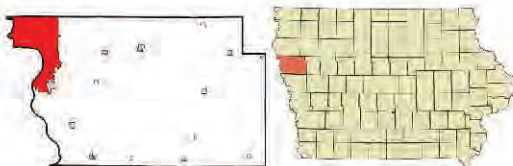
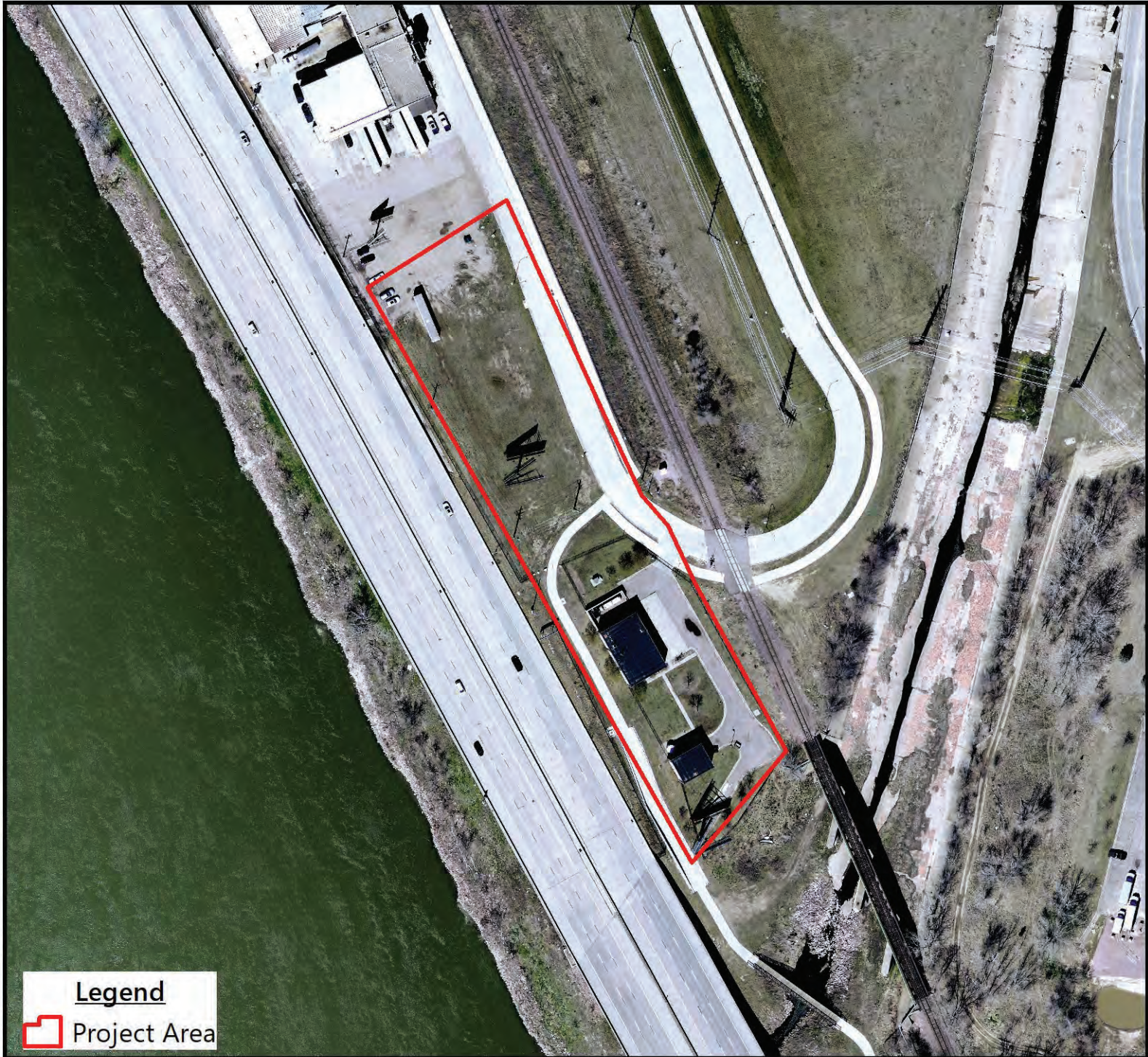


Image source: Wikipedia, 2024.

Scale: 1 inch = 2,000 feet  
0 790 1,580 2,370 3,160 3,950 Feet

USGS 7.5 Minute Quadrangle: Sioux City South  
Section: 34, Township: 89 N, Range: 47 W



**Legend**  
 Project Area

## Lift Station Odor Control - Floyd Lift Station Improvements Reaffirmation Sioux City, Iowa (Woodbury County)

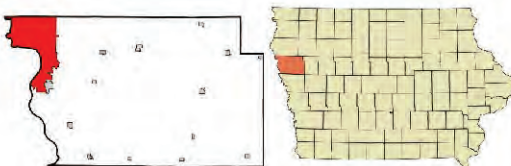
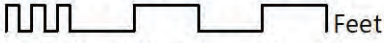
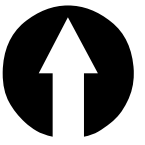


Image source: Wikipedia, 2024.

Scale: 1 inch = 150 feet  
  
0 50 100 150 200 250 Feet

USGS 7.5 Minute Quadrangle: Sioux City South  
Section: 34, Township: 89 N, Range: 47 W



## Aerial Photograph

Sioux City - Floyd Lift Station  
Sioux City, Iowa (Woodbury County)

Scale: 1 inch = 208 feet

