

Why You Should Read This: The document below reviews the environmental impact likely from a State Revolving Fund project. As part of the environmental review, you are entitled to provide comments. If you have concerns about the environmental impact of this project, raise them now. We encourage public input in this decision making process.



IOWA STATE REVOLVING FUND
FINDING OF NO SIGNIFICANT IMPACT

August 19, 2025

To: All Interested Citizens, Government Agencies, and Public Groups

An environmental review has been performed based on the procedures for implementing the National Environmental Policy Act (NEPA), for the proposed agency action below:

Applicant: City of Eagle Grove

County: Wright

State: Iowa

SRF Number: CS1921089 01

Iowa DNR Project Number: S2022-0384A

Other Funding Sources: CDBG

The City of Eagle Grove, Iowa is planning an upgrade to their sanitary sewer collection system. The city has applied for financial assistance through the State Revolving Fund (SRF) loan program to build the project. The State Revolving Loan Program is a program authorized by the Environmental Protection Agency (EPA) and administered by the Iowa Department of Natural Resources (DNR) in partnership with the Iowa Finance Authority.

The City of Eagle Grove is located in Wright County, Iowa approximately 50 miles southwest of Mason City, Iowa and 18 miles northeast of Fort Dodge, Iowa. The population of Eagle Grove according to the 2020 US Census was 3,601 people. The design population equivalent for the year 2045 is 3,500 people.

The City of Eagle Grove operates a mechanical oxidation ditch wastewater treatment facility constructed in 2019. The City recently completed construction for chemical addition at the wastewater treatment facility. Chemical additions include glycerin as a carbon source caustic soda for pH adjustment to aid in nutrient removal during secondary treatment. No other significant changes have taken place. The City operates a network of sewer collection system piping and lift stations throughout the City. One of the City's sewersheds is located in the northwest portion of City Limits between two stretches of the Union Pacific Railroad located to the east and the south. The sewershed contains approximately 69 sanitary sewer service connections. There is a significant amount of infiltration and inflow in the collection system within the sewershed. A lift station that collects the wastewater in the sewershed is situated on the northeast side of the intersection of Highway 17 and N Arthur Avenue, known as the Highway 17 Lift Station. The Highway 17 Lift Station pumps through a force main that runs south from the lift station under N Arthur Avenue until NW 8th

Street where it turns west and runs one block over to Highway 17. At this point the force main drops into a gravity sewer main leading to the wastewater treatment facility. The Highway 17 Lift Station was constructed in 1976 and requires improvements due to its age and condition.

The purpose of this project is to make improvements to the wastewater collection system to enhance its reliability and increase capacity to safely and reliably operate the City of Eagle Grove's wastewater system for the next 20 years. The proposed project includes the replacement of the Highway 17 lift station with a new submersible lift station and various collection system improvements. This will include: demolition of the existing lift station, installation of new lift station structure, pumps, electrical and controls, valves, piping, and backup generator; and all necessary connections and appurtenances. Included in the proposed project is a force main from the lift station to a discharge manhole on Commercial Ave. Collection system improvements to address inflow and infiltration include cleaning and televising, lateral repairs, grouting, chimney seals, lining or replacing areas of existing collection system piping, replacing or lining existing manholes, and raising the rim elevation of manholes where necessary.

The treated wastewater from the wastewater treatment facility discharges to Drainage Ditch #15. It has a use stream designation of A2 (BWW2). Class A2 waters are secondary contact recreational use waters in which recreational or other uses may result in contact with the water that is either incidental or accidental. During the recreational use, the probability of ingesting appreciable quantities of water is minimal. Class A2 uses include fishing, commercial and recreational boating, any limited contact incidental to shoreline activities and activities in which users do not swim or float in the water body while on a boating activity. Waters designated Class B(WW2) are those in which flow or other physical characteristics are capable of supporting a resident aquatic community that includes a variety of native nongame fish and invertebrate species. The flow and other physical characteristics limit the maintenance of warm water game fish populations. These waters generally consist of small perennially flowing streams.

Positive environmental effects will be an improved wastewater collection system located in the northwest portion of the City of Eagle Grove. A catastrophic failure of the existing lift station could result in sewer backups and property damage. Increased infiltration and inflow could result in reduced system capacity and sewer overflows.

The project will not significantly affect the pattern and type of land use (industrial, commercial, agricultural, recreational, residential) or growth and distribution of population. The project will not conflict with local, regional or State land use plans or policies. The project will not impact wetlands. The project will not affect threatened and endangered species or their habitats. If any State- or Federally-listed threatened or endangered species or communities are found during the planning or construction phases, additional studies and/or mitigation may be required. The project will not displace population, alter the character of existing residential areas, or convert significant farmlands to non-agricultural purposes. The project will not affect the 100-year flood plain provided all necessary floodplain development permits, state and local, are obtained and the terms of which are abided by. The DNR issued a state Flood Plain Development Permit Number 2025-0657FP-01. The project will not have effect on parklands, preserves, other public lands, or areas of recognized scenic or recreational value.

Various Native American tribes with an interest in the area were provided information regarding the project. This project will not be receiving federal funds through SRF. As such, this project is not considered a federal undertaking as defined in §300320 under the National Historic Preservation Act, 54 U.S.C. 300101 et seq. for the purpose of the SRF environmental review. If this SRF project receives federal funds from other sources, it is the responsibility of the applicant to ensure all federal requirements are met for that funding. However, if

project activities uncover any item(s) that might be of archaeological, historical, or architectural interest, or if important new archaeological, historical, or architectural data should be encountered in the project APE, the applicant should make reasonable efforts to avoid further impacts to the property until an assessment can be made by an individual meeting the Secretary of the Interior's professional qualifications standards (36 CFR Part 61).

The project will not have a significant adverse effect upon local ambient air quality provided the applicant takes reasonable precautions to prevent the discharge of visible emissions of fugitive dusts beyond the lot line of the property during the proposed project (567 IAC 23.3(2)“c”). The project will not have a significant adverse effect upon local ambient noise levels, surface water quantity, groundwater quality or quantity, or water supply. No significant impact to surface water quality, fish, shellfish, wildlife, or their natural habitats is expected.

Minimum separation distances will be maintained. Noise during construction will be maintained at tolerable levels through controls on construction activities. Any construction debris will be removed from the site for proper disposal. Adverse environmental effects from construction activities will be minimized with proper construction practices, inspection, prompt clean up and other appropriate measures. Areas temporarily disturbed by the construction will be restored.

It has been determined that the proposed action will result in no significant impacts to the surrounding environment. This determination is based on a careful review of the engineering report, the environmental assessment and other supporting data which are on file at the Department of Natural Resources' office in Des Moines, Iowa. These are available for public review upon request. A copy of the environmental assessment is attached. This Department will not take any administrative action on the project for at least thirty (30) calendar days from the above date. Persons disagreeing with the above environmental decision may submit comments to the department during this period. Your comments can be sent to SRF-PC@dnr.iowa.gov or directly to me at Rebecca.FlynnKettman@dnr.iowa.gov or (515) 204-5672.

Sincerely,

Becca Flynn Kettman
Environmental Specialist
6200 Park Ave, Suite 200
Des Moines, IA 50321

Enclosures: Environmental Assessment
Project Map

Distribution

List (email): Katie Sterk, Bolton & Menk, Inc.
Tori Smiley, Bolton & Menk, Inc.
Eric Cowles, Bolton & Menk, Inc.
Melanie Mitchell, Simmering-Cory, Inc.
Edward Boling, Council on Environmental Quality

Jake Hansen, Iowa Department of Agriculture and Land Stewardship
Ken Sharp, Iowa Department of Health & Human Services
Mindy Wells, Iowa Department of Health & Human Services
Chad Sands, Iowa Economic Development Authority
Alicia Vasto, Iowa Environmental Council
Michael Schmidt, Iowa Environmental Council
Tony Toigo, Iowa Finance Authority
Lee Wagner, Iowa Finance Authority
Mickey Shields, Iowa League of Cities
Jane Clark, Sierra Club
Josh Mandelbaum, Environmental Law and Policy Center
Kate Sand, USDA Rural Development
Tokey Boswell, USDOI, National Park Service, Midwest Region
Kraig McPeck, Fish and Wildlife Service, Rock Island Field Office
Ann D'Alfonso, USEPA Region VII
Kelly Beard-Tittone, USEPA Region VII
The Eagle Grove Eagle

Why You Should Read This: The document below reviews the environmental impact likely from a State Revolving Fund project. As part of the environmental review, you are entitled to provide comments. If you have concerns about the environmental impact of this project, raise them now. We encourage public input in this decision making process.



IOWA STATE REVOLVING FUND
ENVIRONMENTAL ASSESSMENT DOCUMENT

PROJECT IDENTIFICATION

Applicant: City of Eagle Grove
County: Wright
State: Iowa

SRF Number: CS1921089 01
Iowa DNR Project Number: S2022-0384A

Other Funding Sources: CDBG

COMMUNITY DESCRIPTION

Location: The City of Eagle Grove is located in Wright County, Iowa approximately 50 miles southwest of Mason City, Iowa and 18 miles northeast of Fort Dodge, Iowa.

Population: The population of Eagle Grove according to the 2020 US Census was 3,601 people. The design population equivalent for the year 2045 is 3,500 people.

Current Waste Treatment: The City of Eagle Grove operates a mechanical oxidation ditch wastewater treatment facility constructed in 2019. The City recently completed construction for chemical addition at the wastewater treatment facility. Chemical additions include glycerin as a carbon source caustic soda for pH adjustment to aid in nutrient removal during secondary treatment. No other significant changes have taken place.

Current Waste Collection System: The City operates a network of sewer collection system piping and lift stations throughout the City. One of the City's sewersheds is located in the in the northwest portion of City Limits between two stretches of the Union Pacific Railroad located to the east and the south. The sewershed contains approximately 69 sanitary sewer service connections. There is a significant amount of infiltration and inflow in the collection system within the sewershed. A lift station that collects the wastewater in the sewershed is situated on the northeast side of the intersection of Highway 17 and N Arthur Avenue, known as the Highway 17 Lift Station. The Highway 17 Lift Station pumps through a force main that runs south from the lift station under N Arthur Avenue until NW 8th Street. where it turns west and runs one block over to Highway 17. At this point the force main drops into a gravity sewer main leading to the wastewater treatment facility. The Highway 17 Lift Station was constructed in 1976 and requires improvements due to its age and condition.

PROJECT DESCRIPTION

Purpose: The purpose of this project is to make improvements to the wastewater collection system to enhance its reliability and increase capacity to safely and reliably operate the City of Eagle Grove's wastewater system for the next 20 years.

Proposed Improvements: The proposed project includes the replacement of the Highway 17 lift station with a new submersible lift station and various collection system improvements. This will include: demolition of the existing lift station, installation of new lift station structure, pumps, electrical and controls, valves, piping, and backup generator; and all necessary connections and appurtenances. Included in the proposed project is a force main from the lift station to a discharge manhole on Commercial Ave. Collection system improvements to address inflow and infiltration include cleaning and televising, lateral repairs, grouting, chimney seals, lining or replacing areas of existing collection system piping, replacing or lining existing manholes, and raising the rim elevation of manholes where necessary.

Receiving Stream: The treated wastewater from the wastewater treatment facility discharges to Drainage Ditch #15. It has a use stream designation of A2 (BWW2). Class A2 waters are secondary contact recreational use waters in which recreational or other uses may result in contact with the water that is either incidental or accidental. During the recreational use, the probability of ingesting appreciable quantities of water is minimal. Class A2 uses include fishing, commercial and recreational boating, any limited contact incidental to shoreline activities and activities in which users do not swim or float in the water body while on a boating activity. Waters designated Class B(WW2) are those in which flow or other physical characteristics are capable of supporting a resident aquatic community that includes a variety of native nongame fish and invertebrate species. The flow and other physical characteristics limit the maintenance of warm water game fish populations. These waters generally consist of small perennially flowing streams.

ALTERNATIVES CONSIDERED

Alternatives Considered: The City considered two options (Option A and Option B) for sewer collection system improvements. The City's two alternatives were to complete the lift station improvements and only the necessary collection system improvements (i.e., no service lining work) or complete the lift station improvements and all recommended collection system improvements. Option A includes all necessary collection system improvements within the sewershed without additional service connection lining work. This includes lining all collection system mains and manholes, grouting connections, and manhole improvements. Option B includes all recommended collection system improvements, including the lining or replacement of all existing service connections within the entire sewershed. It was not recommended that the City attempt to forgo lift station improvements or rehabilitate the existing lift station due to a risk of catastrophic failure of the existing lift station and the costs of replacing failing and aging infrastructure. Thus, the City considered only one lift station improvements alternative to construct a new lift station.

Reasons for Selection of Proposed Alternative: The No-Action alternative is not viable due to the aging lift station infrastructure and significant infiltration and inflow in the collection system. By completing the collection system improvements without lining service connections, the City will be able to reduce infiltration and inflow to the lift station without significantly increasing the project cost. The project site was selected for

the availability of land as well as minimization of the impacts to the environment. The City is finalizing property easements required to complete the project.

MEASURES TAKEN TO ASSESS IMPACT

Public Involvement: A public hearing was held on August 13, 2025 at 7:00 a.m. at the utility board meeting. The public notice of this hearing was placed on the City website on July 9, 2025, made available by publication in the Eagle Grove Eagle on July 10, 2025 and posted to the City Facebook account on July 10, 2025. The purpose of this hearing was to present the environmental and financial impacts of the proposed improvement project. No written or oral comments were received.

Coordination and Documentation with Other Agencies and Special Interest Groups: The following Federal, state and local agencies were asked to comment on the proposed project to better assess the potential impact to the environment:

- U.S. Fish and Wildlife Service
- State Historical Society of Iowa (State Historical Preservation Office)
- Iowa DNR Conservation and Recreation Division
- Iowa DNR Flood Plain Management Section
- Flandreau Santee Sioux
- Ho-Chunk Nation
- Iowa Tribe of Kansas and Nebraska
- Iowa Tribe of Oklahoma
- Kickapoo Tribe in Kansas
- Kickapoo Tribe of Oklahoma
- Lower Sioux Indian Community Council
- Miami Tribe of Oklahoma
- Omaha Tribal Council
- Otoe-Missouria Tribe
- Pawnee Nation of Oklahoma
- Peoria Tribe of Indians of Oklahoma
- Ponca Tribe of Indians of Oklahoma
- Ponca Tribe of Nebraska
- Prairie Band Potawatomi Nation
- Prairie Island Indian Community
- Sac & Fox Nation of Mississippi in Iowa
- Sac & Fox Nation of Missouri
- Sac & Fox Nation of Oklahoma
- Santee Sioux Nation
- Shakopee Mdewakanton Sioux Community
- Sisseton-Wahpeton Oyate
- Spirit Lake Tribal Council
- Three Affiliated Tribes Mandan, Hidatsa & Arikara Nations
- Upper Sioux Tribe
- Winnebago Tribal Council
- Yankton Sioux Tribal Business and Claims Committee

No adverse comments were received from any agencies or general public. Conditions placed on the applicant by the above agencies in order to assure no significant impact are included in the Summary of Reasons for Concluding No Significant Impact section.

ENVIRONMENTAL IMPACT SUMMARY

Construction: Traffic patterns within the community may be disrupted and above normal noise levels in the vicinity of the construction equipment can be anticipated during construction and should be a temporary problem. Adverse environmental impacts on noise quality will be handled by limited hours of contractor work time during the day. Other adverse environmental effects from construction activities will be minimized by proper construction practices, inspection, prompt cleanup, and other appropriate measures. Areas temporarily disturbed by the construction will be restored. Solid wastes resulting from the construction project will be regularly cleared away with substantial efforts made to minimize inconvenience to area residents. Care will be taken to maintain dirt to avoid erosion and runoff.

Temporary air quality degradation may occur due to dust and fumes from construction equipment. The applicant shall take reasonable precautions to prevent the discharge of visible emissions of fugitive dusts beyond the lot line of the property during the proposed project (567 Iowa Administrative Code IAC 23.3(2)“c”). This project does include construction of equipment that has a potential to emit criteria pollutants and/or hazardous air pollutants. However, the equipment’s potential to emit and anticipated actual emissions are below minor source reporting thresholds.

This project may require the disposal of sewage sludge. It is the responsibility of the applicant to ensure that the disposal of any sewage sludge complies with applicable requirements found in 40 CFR Part 503 and 567 Iowa Administrative Code IAC 67.

Historical/Archaeological: Various Native American tribes with an interest in the area were provided information regarding the project. This project will not be receiving federal funds through SRF. As such, this project is not considered a federal undertaking as defined in §300320 under the National Historic Preservation Act, 54 U.S.C. 300101 et seq. for the purpose of the SRF environmental review. If this SRF project receives federal funds from other sources, it is the responsibility of the applicant to ensure all federal requirements are met for that funding. However, if project activities uncover any item(s) that might be of archaeological, historical, or architectural interest, or if important new archaeological, historical, or architectural data should be encountered in the project APE, the applicant should make reasonable efforts to avoid further impacts to the property until an assessment can be made by an individual meeting the Secretary of the Interior’s professional qualifications standards (36 CFR Part 61).

Environmental: The City submitted an Iowa DNR Flood Plain & Sovereign Lands Permit Application. According to the Iowa DNR Conservation and Recreation Division, the proposed project will not interfere with any State-owned parks, recreational areas or open spaces. The project will not impact wetlands. The project will not impact any wild and scenic rivers as none exist within the State of Iowa. The U.S. Fish & Wildlife Service Section 7 Technical Assistance website consultation determined, and Iowa DNR Conservation and Recreation Division agree, that the project will not impact protected species or their habitats. However, if any State- or Federally-listed threatened or endangered species or communities are found during the planning or construction phases, additional studies and/or mitigation may be required. According to the Iowa DNR Flood Plain Management Section, this project will not impact the 100-year floodplain provided all necessary floodplain development permits, state and local, are obtained and the terms of which are abided by. The DNR

issued a state Flood Plain Development Permit Number 2025-0657FP-01. No adverse impacts are expected to result from this project, such as those to surface water quantity, or groundwater quality or quantity. No significant impact to surface water quality, fish, shellfish, wildlife, or their natural habitats is expected.

Land Use and Trends: The project will not displace population nor will it alter the character of existing residential areas. The proposed project is within the present corporate limits of Eagle Grove in areas zoned residential, commercial, or industrial. No significant farmlands will be impacted. This project should not impact population trends as the presence or absence of existing water/sewer infrastructure is unlikely to induce significant alterations in the population growth or distribution given the myriad of factors that influence development in this region. Similarly, this project is unlikely to induce significant alterations in the pattern and type of land use.

Irreversible and Irretrievable Commitment of Resources: Fuels, materials, and various forms of energy will be utilized during construction.

Nondiscrimination: All programs, projects, and activities undertaken by DNR in the SRF programs are subject to federal anti-discrimination laws, including the Civil Rights Act of 1964, section 504 of the Rehabilitation Act of 1973, and section 13 of the Federal Water Pollution Control Amendments of 1972. These laws prohibit discrimination on the basis of race, color, national origin, sex, disability, or age.

POSITIVE ENVIRONMENTAL EFFECTS TO BE REALIZED FROM THE PROPOSED PROJECT

Positive environmental effects will be an improved wastewater collection system located in the northwest portion of the City of Eagle Grove. A catastrophic failure of the existing lift station could result in sewer backups and property damage. Increased infiltration and inflow could result in reduced system capacity and sewer overflows.

SUMMARY OF REASONS FOR CONCLUDING NO SIGNIFICANT IMPACT

- The project will not significantly affect the pattern and type of land use (industrial, commercial, agricultural, recreational, residential) or growth and distribution of population.
- The project will not conflict with local, regional or State land use plans or policies.
- The project will not impact wetlands.
- The project will not affect threatened and endangered species or their habitats. If any State- or Federally-listed threatened or endangered species or communities are found during the planning or construction phases, additional studies and/or mitigation may be required.
- The project will not displace population, alter the character of existing residential areas, or convert significant farmlands to non-agricultural purposes.
- The project will not affect the 100-year flood plain provided all necessary floodplain development permits, state and local, are obtained and the terms of which are abided by. The DNR issued a state Flood Plain Development Permit Number 2025-0657FP-01.
- The project will not have effect on parklands, preserves, other public lands, or areas of recognized scenic or recreational value.
- Various Native American tribes with an interest in the area were provided information regarding the project. This project will not be receiving federal funds through SRF. As such, this project is not considered a federal undertaking as defined in §300320 under the National Historic Preservation Act, 54 U.S.C. 300101 et seq. for the purpose of the SRF environmental review. If this SRF project receives

federal funds from other sources, it is the responsibility of the applicant to ensure all federal requirements are met for that funding. However, if project activities uncover any item(s) that might be of archaeological, historical, or architectural interest, or if important new archaeological, historical, or architectural data should be encountered in the project APE, the applicant should make reasonable efforts to avoid further impacts to the property until an assessment can be made by an individual meeting the Secretary of the Interior's professional qualifications standards (36 CFR Part 61).

- The project will not have a significant adverse effect upon local ambient air quality provided the applicant takes reasonable precautions to prevent the discharge of visible emissions of fugitive dusts beyond the lot line of the property during the proposed project (567 IAC 23.3(2)“c”).
- The project will not have a significant adverse effect upon local ambient noise levels, surface water quantity, groundwater quality or quantity, or water supply.
- No significant impact to surface water quality, fish, shellfish, wildlife, or their natural habitats is expected.

THEREFORE:

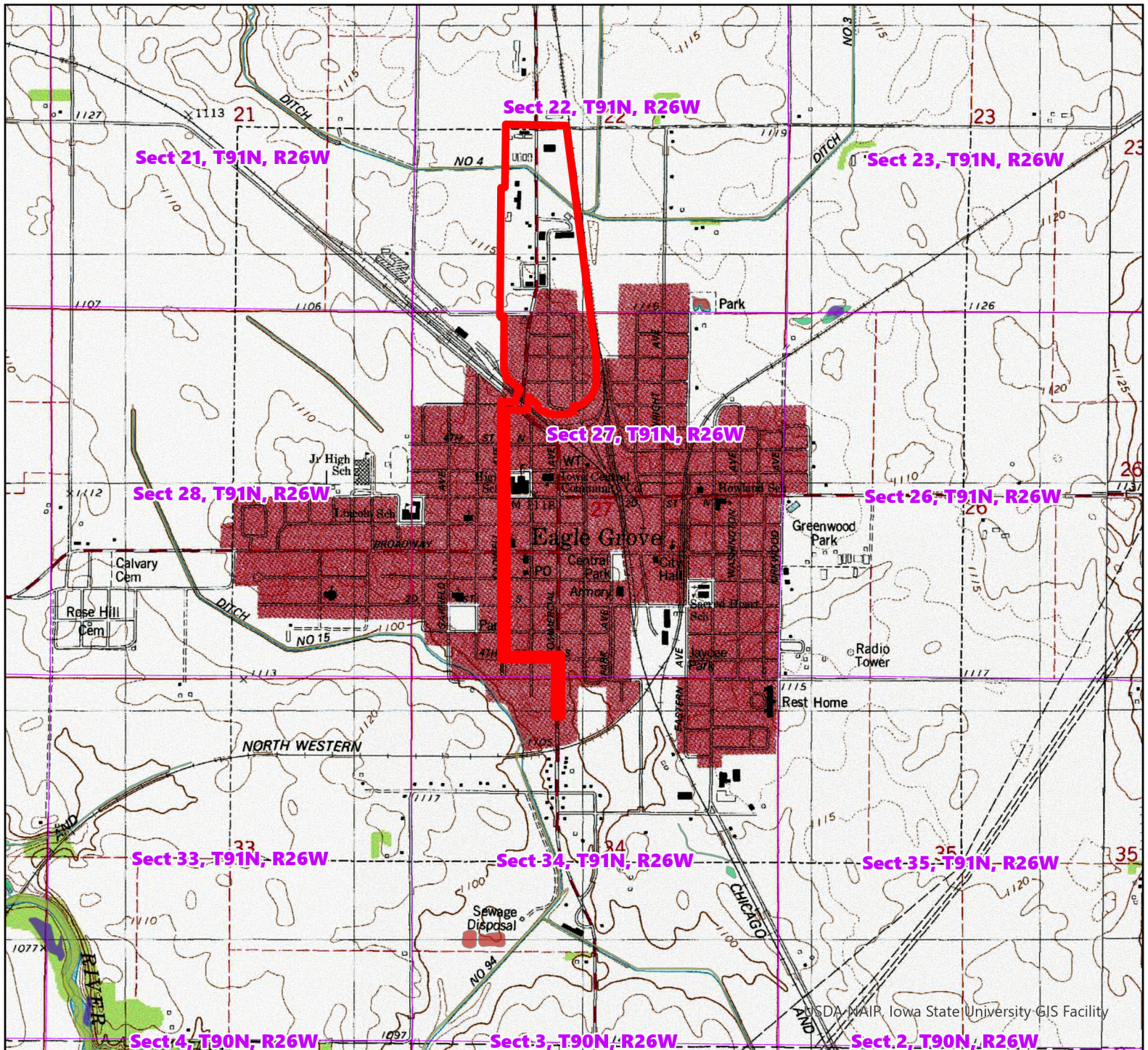
The above project conforms to the criteria in 567 Iowa Administrative Code 92.8(1)“b” relating to compliance with the National Environmental Policy Act of 1969. This Environmental Assessment Document (EAD) outlines the justification that the environmental review for the proposed project should be classified as a Finding of No Significant Impact (FNSI) and does not rise to the significance of an Environmental Impact Statement (EIS) in accordance with 40 CFR § 1501.5.

Rebecca Flynn Kettman

Environmental Review Specialist

State Revolving Fund

Iowa Department of Natural Resources



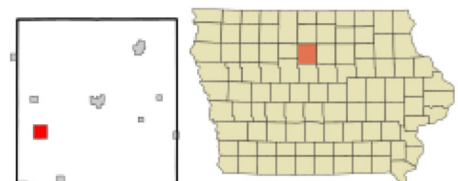
USGS Topographic Map

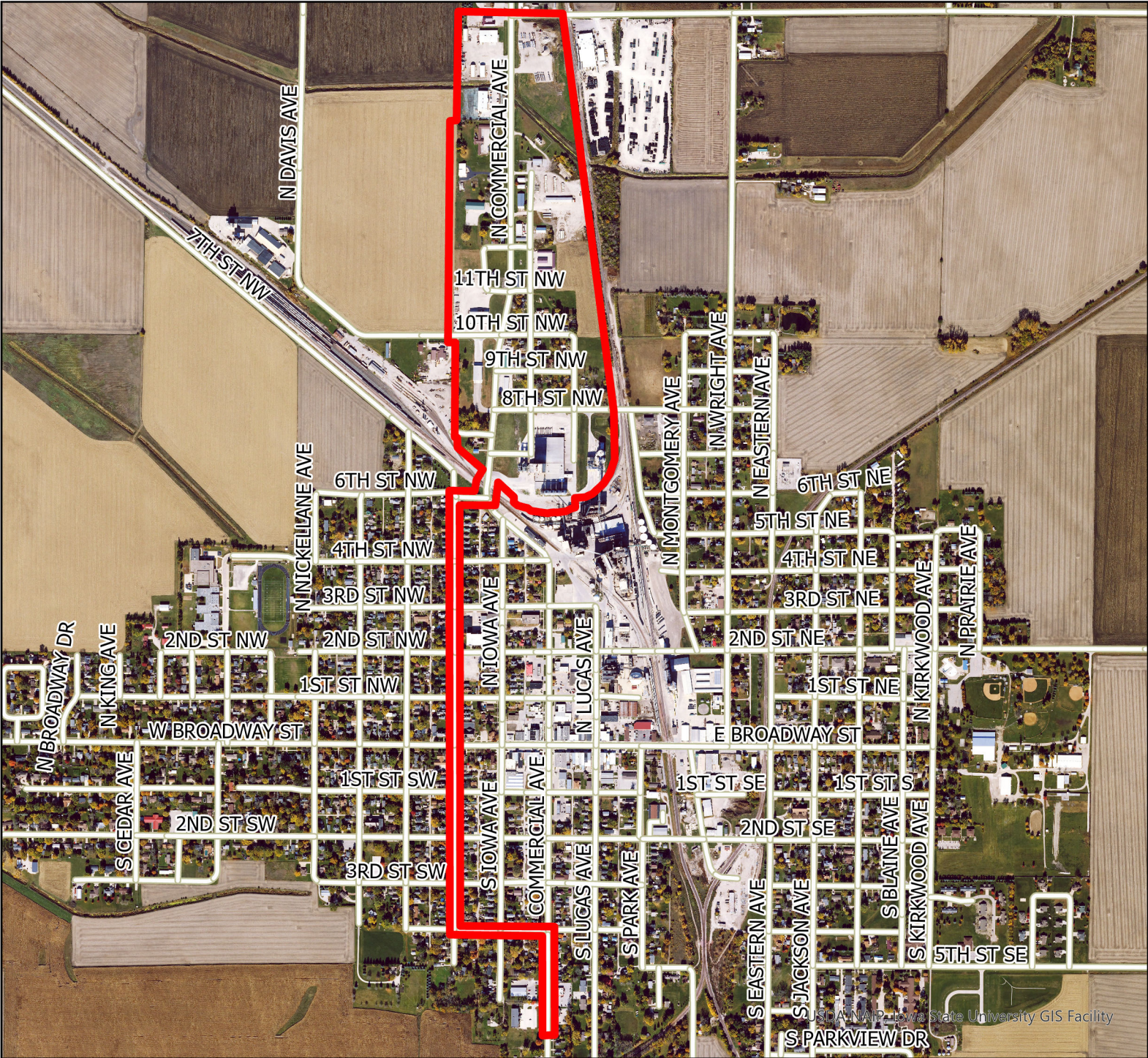
0 1,500 3,000 6,000 Feet

City of Eagle Grove Hwy 17 Lift Station Improvements
Eagle Grove, IA (Wright County)

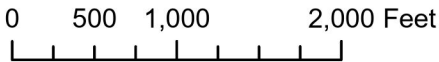
Legend

 Proposed Project Area





City of Eagle Grove Hwy 17 Lift Station Improvements
Eagle Grove, IA (Wright County)



Legend

 Proposed Project Area