

**Why You Should Read This:** The document below reviews the environmental impact likely from a State Revolving Fund project. As part of the environmental review, you are entitled to provide comments. If you have concerns about the environmental impact of this project, raise them now. We encourage public input in this decision-making process.



**IOWA STATE REVOLVING FUND**  
**CATEGORICAL EXCLUSION**

June 5, 2025

**To: All Interested Citizens, Government Agencies, and Public Groups**

An environmental review has been performed based on the procedures for implementing the National Environmental Policy Act (NEPA), for the proposed agency action below:

**Applicant:** Muscatine Power and Water (MPW)

**County:** Muscatine

**State:** Iowa

**SRF Number:** FS-70-24-DWSRF-052

**Iowa DNR Project Number:** W2024-0129

MPW in Muscatine, Iowa is planning an upgrade to their drinking water service lines. MPW has applied for financial assistance through the State Revolving Fund (SRF) loan program to build the project. SRF is a program authorized by the Environmental Protection Agency (EPA) and administered by the Iowa Department of Natural Resources (DNR) in partnership with the Iowa Finance Authority.

The proposed project includes the replacement of lead or galvanized steel service lines between the municipal water main and the home/business. This list of addresses includes approximately 160 addresses whose service lines may be lead or galvanized steel based on current information. Only those lines confirmed to be lead or galvanized steel will be included in this replacement project.

The proposed project was reviewed for eligibility for a categorical exclusion from NEPA review specified in the 40 CFR (Code of Federal Regulations) Part 6.204. The project meets all criteria described in the above reference and was determined that this project is eligible for a categorical exclusion. Consequently, a preliminary decision has been made that a Finding of No Significant Impact (FNSI) will not be prepared.

Justification for granting categorical exclusion:

- The project as proposed is solely directed toward minor upgrading or minor expansion of system capacity, rehabilitation of the existing system and system components, or construction of new minor ancillary facilities adjacent to or on the same property as existing facilities.
- This project will not involve new or relocated discharges to surface or ground water.
- This project will not result in substantial increase in the volume or the loading of pollutant to the receiving water.

- The project will not serve a population 30% greater than the existing population.
- The project is not directly or indirectly involved or related to upgrading or extending infrastructure systems primarily for the purposes of future development.
- The project is not counter to the state, or other regional growth plan or strategy.
- The proposed action is not known or expected to have potentially significant environmental impacts on the quality of the human environment either individually or cumulatively over time.
- The proposed action is not known or expected to have disproportionately high and adverse human health or environmental effects on any community, including minority communities, low-income communities, or federally-recognized Indian tribal communities.
- The proposed action is not known or expected to significantly affect federally listed threatened or endangered species or their critical habitat.
- The proposed action is not known or expected to significantly affect national natural landmarks or any property with nationally significant historic, architectural, prehistoric, archeological, or cultural value, including but not limited to, property listed on or eligible for the National Register of Historic Places.
- The proposed action is not known or expected to significantly affect environmentally important natural resource areas such as wetlands, floodplains, significant agricultural lands, aquifer recharge zones, coastal zones, barrier islands, wild and scenic rivers, and significant fish or wildlife habitat.
- The proposed action is not known or expected to cause significant adverse air quality effects.
- The proposed action is not known or expected to have a significant effect on the pattern and type of land use (industrial, commercial, agricultural, recreational, residential) or growth and distribution of population including altering the character of existing residential areas, or may not be consistent with state or local government, or federally-recognized Indian tribe approved land use plans or federal land management plans.
- The proposed action is not known or expected to cause significant public controversy about a potential environmental impact of the proposed action.
- The proposed action is not known or expected to be associated with providing financial assistance to a federal agency through an interagency agreement for a project that is known or expected to have potentially significant environmental impacts.
- The proposed action is not known or expected to conflict with federal, state or local government, or federally-recognized Indian tribe environmental, resource-protection, or land-use laws or regulations.

The Department of Natural Resources shall revoke the categorical exclusion and shall require a full environmental review if, subsequent to the granting of an exclusion, the state determines that:

- The proposed project no longer meets the requirements for a categorical exclusion due to changes in the proposed project; or
- New evidence reveals that serious local or environmental issues exist; or
- Federal, State, local or tribal laws are being violated.

This action is taken on the basis of a careful review of supporting information that is on file at the Department of Natural Resources' Des Moines, Iowa office. This information is available upon request. This Department will not take any administrative action on the project for at least thirty (30) calendar days from the above date. Persons disagreeing with the above environmental decision may submit comments to the Department during this period. Your comments can be sent to [SRF-PC@dnr.iowa.gov](mailto:SRF-PC@dnr.iowa.gov) or directly to me at [Nicole.Osborn@dnr.iowa.gov](mailto:Nicole.Osborn@dnr.iowa.gov) or (515) 321-7601.

Sincerely,

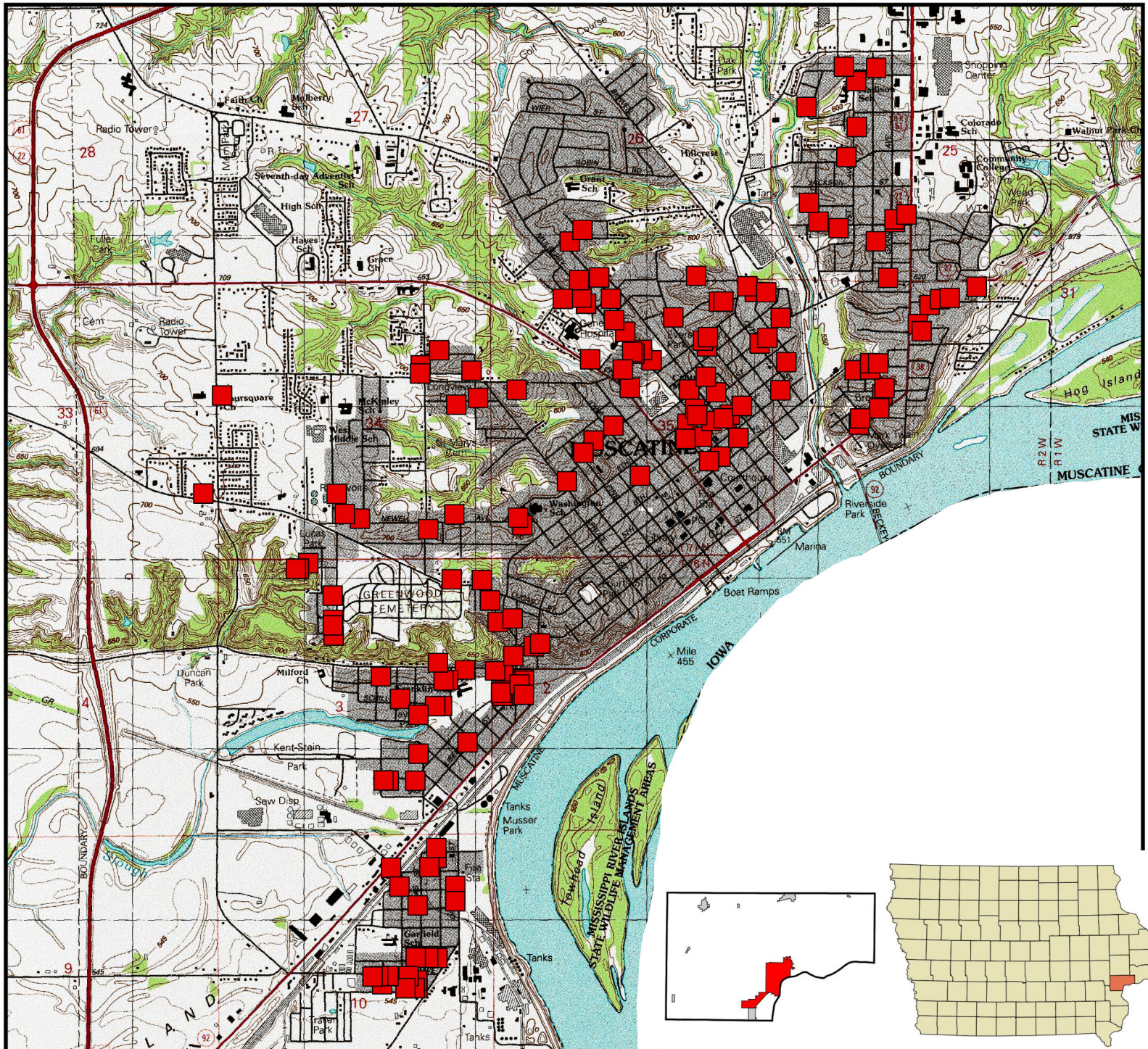
Nicole Osborn  
Environmental Review Specialist  
6200 Park Ave, Suite 200  
Des Moines, IA 50321

Enclosure: Project Map  
Final Address List

Distribution

List (email): Edward Boling, Council on Environmental Quality  
Jake Hansen, Iowa Department of Agriculture and Land Stewardship  
Ken Sharp, Iowa Department of Health & Human Services  
Mindy Wells, Iowa Department of Health & Human Services  
Chad Sands, Iowa Economic Development Authority  
Alicia Vasto, Iowa Environmental Council  
Michael Schmidt, Iowa Environmental Council  
Tracy Scebold, Iowa Finance Authority  
Tony Toigo, Iowa Finance Authority  
Lee Wagner, Iowa Finance Authority  
Mickey Shields, Iowa League of Cities  
Jane Clark, Sierra Club  
Josh Mandelbaum, Environmental Law and Policy Center  
Kate Sand, USDA Rural Development  
Tokey Boswell, USDO, National Park Service, Midwest Region  
Kraig McPeck, Fish and Wildlife Service, Rock Island Field Office  
Ann D'Alfonso, USEPA Region VII  
Kelly Beard-Tittone, USEPA Region VII  
Muscatine Journal



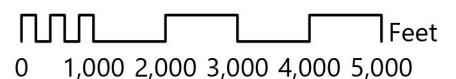


Muscatine County. Image source: Wikipedia, 2025.

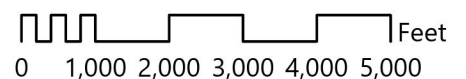
## Muscatine Power & Water LSL Replacement Project Muscatine, IA (Muscatine County, Iowa)

**Legend**  
 Project Areas

Scale: 1:32,000

 Feet  
0 1,000 2,000 3,000 4,000 5,000







Address	Material	DAC	Replacement Method
1000 E 9TH ST	Galvanized	Yes	Pull Through/Non-Destructive
1005 NEBRASKA ST	Galvanized	Yes	Pull Through/Non-Destructive
1007 STONE ST	Lead	Yes	Pull Through/Non-Destructive
1008 SPRING ST	Lead	Yes	Pull Through/Non-Destructive
1009 E 7TH ST	Galvanized	Yes	Pull Through/Non-Destructive
101 W 7TH ST	Lead	Yes	Pull Through/Non-Destructive
1012 E 9TH ST	Lead	Yes	Pull Through/Non-Destructive
1019 LINCOLN BLVD	Galvanized	Yes	Pull Through/Non-Destructive
1021 NEWELL AVE	Lead	Yes	Pull Through/Non-Destructive
1028 LOMBARD ST	Lead	Yes	Pull Through/Non-Destructive
1035 NEWELL AVE	Galvanized	Yes	Pull Through/Non-Destructive
105 E 10TH ST	Galvanized	Yes	Pull Through/Non-Destructive
106 NYENHUIS ST	Galvanized	Yes	Pull Through/Non-Destructive
106 POND ST	Galvanized	Yes	Pull Through/Non-Destructive
109 MAGNOLIA ST	Lead	Yes	Pull Through/Non-Destructive
1100 GRANDVIEW AVE	Galvanized	Yes	Pull Through/Non-Destructive
1103 CEDAR ST	Galvanized	Yes	Pull Through/Non-Destructive
1111 MULBERRY AVE	Galvanized	Yes	Pull Through/Non-Destructive
1113 E 2ND ST	Galvanized	Yes	Pull Through/Non-Destructive
1117 OREGON ST	Galvanized	Yes	Pull Through/Non-Destructive
1119 E 9TH ST	Galvanized	Yes	Pull Through/Non-Destructive
1119 WISCONSIN ST	Lead	Yes	Pull Through/Non-Destructive
112 MAGNOLIA ST	Lead	Yes	Pull Through/Non-Destructive
1141 LOGAN ST	Lead	Yes	Pull Through/Non-Destructive
117 MONROE ST	Galvanized	Yes	Pull Through/Non-Destructive
117 ROSELAWN AVE	Lead	Yes	Pull Through/Non-Destructive
119 ROSELAWN AVE	Lead	Yes	Pull Through/Non-Destructive
119 W 10TH ST	Galvanized	Yes	Pull Through/Non-Destructive
120 SHERMAN ST	Galvanized	Yes	Pull Through/Non-Destructive
1203 OAK ST	Galvanized	Yes	Pull Through/Non-Destructive
1205 GRAND AVE	Galvanized	Yes	Pull Through/Non-Destructive
1207 MULBERRY AVE	Galvanized	Yes	Pull Through/Non-Destructive
1208 MULBERRY AVE	Galvanized	Yes	Pull Through/Non-Destructive
1208 PARK AVE	Galvanized	Yes	Pull Through/Non-Destructive
1209 DALE ST	Galvanized	Yes	Pull Through/Non-Destructive
1209 KANSAS ST	Lead	Yes	Pull Through/Non-Destructive
1214 MULBERRY AVE	Galvanized	Yes	Pull Through/Non-Destructive
1215 OREGON ST	Galvanized	Yes	Pull Through/Non-Destructive
1220 E 4TH ST	Galvanized	Yes	Pull Through/Non-Destructive
1221 E 4TH ST	Lead	Yes	Pull Through/Non-Destructive
1232 DALE ST	Lead	Yes	Pull Through/Non-Destructive
1248 E 5TH ST	Galvanized	Yes	Pull Through/Non-Destructive
1305 E 2ND ST	Lead	Yes	Pull Through/Non-Destructive
131 ROSCOE AVE	Galvanized	Yes	Pull Through/Non-Destructive
1315 MULBERRY AVE	Galvanized	Yes	Pull Through/Non-Destructive
1316 E 5TH ST	Lead	Yes	Pull Through/Non-Destructive

1317 CEDAR ST	Lead	Yes	Pull Through/Non-Destructive
1321 E 5TH ST	Galvanized	Yes	Pull Through/Non-Destructive
133 SHERMAN ST	Galvanized	Yes	Pull Through/Non-Destructive
1405 E 5TH ST	Galvanized	Yes	Pull Through/Non-Destructive
1413 MULBERRY AVE	Galvanized	Yes	Pull Through/Non-Destructive
147 SHERMAN ST	Galvanized	Yes	Pull Through/Non-Destructive
1499 WASHINGTON ST	Galvanized	Yes	Pull Through/Non-Destructive
1503 BUELL ST	Galvanized	Yes	Pull Through/Non-Destructive
1503 MILL ST	Galvanized	Yes	Pull Through/Non-Destructive
1503 NEW HAMPSHIRE ST	Lead	Yes	Pull Through/Non-Destructive
1505 MILL ST	Lead	Yes	Pull Through/Non-Destructive
1506 HERSHEY AVE	Galvanized	Yes	Pull Through/Non-Destructive
1507 MILL ST	Lead	Yes	Pull Through/Non-Destructive
1514 HERSHEY AVE	Lead	Yes	Pull Through/Non-Destructive
1519 HOUSER ST	Galvanized	Yes	Pull Through/Non-Destructive
1574 WASHINGTON ST	Lead	Yes	Pull Through/Non-Destructive
1605 1ST AVE	Galvanized	Yes	Pull Through/Non-Destructive
1608 MULBERRY AVE	Galvanized	Yes	Pull Through/Non-Destructive
1611 LUCAS ST	Galvanized	Yes	Pull Through/Non-Destructive
1614 LOGAN ST	Galvanized	Yes	Pull Through/Non-Destructive
1614 MULBERRY AVE	Galvanized	Yes	Pull Through/Non-Destructive
1617 ORANGE ST	Galvanized	Yes	Pull Through/Non-Destructive
1706 HERSHEY AVE	Galvanized	Yes	Pull Through/Non-Destructive
1707 MULBERRY AVE	Lead	Yes	Pull Through/Non-Destructive
1711 INDIANA ST	Galvanized	Yes	Pull Through/Non-Destructive
1712 BRYAN AVE	Galvanized	Yes	Pull Through/Non-Destructive
1801 FOSTER ST	Galvanized	Yes	Pull Through/Non-Destructive
1803 DEMOREST AVE	Galvanized	Yes	Pull Through/Non-Destructive
1803 NEW HAMPSHIRE ST	Galvanized	Yes	Pull Through/Non-Destructive
1806 SCHILLER ST	Galvanized	Yes	Pull Through/Non-Destructive
1807 NEW HAMPSHIRE ST	Lead	Yes	Pull Through/Non-Destructive
1811 BAKER AVE	Galvanized	Yes	Pull Through/Non-Destructive
1811 LUCAS ST	Lead	Yes	Pull Through/Non-Destructive
1814 SCHILLER ST	Galvanized	Yes	Pull Through/Non-Destructive
1815 DEMOREST AVE	Galvanized	Yes	Pull Through/Non-Destructive
1817 HERSHEY AVE	Galvanized	Yes	Pull Through/Non-Destructive
1903 ONEIDA AVE	Galvanized	Yes	Pull Through/Non-Destructive
1903 W FULLIAM AVE	Galvanized	Yes	Pull Through/Non-Destructive
1903 WALLACE ST	Galvanized	Yes	Pull Through/Non-Destructive
1904 SAMPSON ST	Galvanized	Yes	Pull Through/Non-Destructive
1907 DEMOREST AVE	Galvanized	Yes	Pull Through/Non-Destructive
1907 WALLACE ST	Galvanized	Yes	Pull Through/Non-Destructive
1910 BREESE AVE	Galvanized	Yes	Pull Through/Non-Destructive
1914 SAMPSON ST	Galvanized	Yes	Pull Through/Non-Destructive
1915 WALLACE ST	Galvanized	Yes	Pull Through/Non-Destructive
1943 ORANGE ST	Galvanized	Yes	Pull Through/Non-Destructive
2011 1ST AVE	Galvanized	Yes	Pull Through/Non-Destructive

2014 SAMPSON ST	Galvanized	Yes	Pull Through/Non-Destructive
2020 BREESE AVE	Galvanized	Yes	Pull Through/Non-Destructive
2026 BREESE AVE	Galvanized	Yes	Pull Through/Non-Destructive
207 BRIDGEMAN ST	Lead	Yes	Pull Through/Non-Destructive
208 ROSELAWN AVE	Lead	Yes	Pull Through/Non-Destructive
209 KINDLER AVE	Galvanized	Yes	Pull Through/Non-Destructive
210 BROOK ST	Lead	Yes	Pull Through/Non-Destructive
2106 SAMPSON ST	Galvanized	Yes	Pull Through/Non-Destructive
2107 LINCOLN BLVD	Galvanized	Yes	Pull Through/Non-Destructive
2112 SAMPSON ST	Lead	Yes	Pull Through/Non-Destructive
212 BRIDGEMAN ST	Lead	Yes	Pull Through/Non-Destructive
214 BRIDGEMAN ST	Lead	Yes	Pull Through/Non-Destructive
214 GILBERT ST	Galvanized	Yes	Pull Through/Non-Destructive
219 ROSELAWN AVE	Galvanized	Yes	Pull Through/Non-Destructive
226 DILLAWAY ST	Galvanized	Yes	Pull Through/Non-Destructive
3011 LUCAS ST	Galvanized	Yes	Pull Through/Non-Destructive
308 W FULLIAM AVE	Galvanized	Yes	Pull Through/Non-Destructive
311 BUSCH ST	Galvanized	Yes	Pull Through/Non-Destructive
313 BARTLETT ST	Galvanized	Yes	Pull Through/Non-Destructive
314 CLINTON ST	Galvanized	Yes	Pull Through/Non-Destructive
316 MAIN ST	Lead	Yes	Pull Through/Non-Destructive
326 GREEN ST	Galvanized	Yes	Pull Through/Non-Destructive
331 GREEN ST	Lead	Yes	Pull Through/Non-Destructive
400 FLETCHER AVE	Galvanized	Yes	Pull Through/Non-Destructive
406 PARHAM ST	Lead	Yes	Pull Through/Non-Destructive
407 CLAY ST	Galvanized	Yes	Pull Through/Non-Destructive
410 BUSCH ST	Galvanized	Yes	Pull Through/Non-Destructive
410 E 8TH ST	Galvanized	Yes	Pull Through/Non-Destructive
412 BUSCH ST	Galvanized	Yes	Pull Through/Non-Destructive
412 E 7TH ST	Galvanized	Yes	Pull Through/Non-Destructive
414 MONROE ST	Galvanized	Yes	Pull Through/Non-Destructive
415 MCARTHUR ST	Galvanized	Yes	Pull Through/Non-Destructive
500 FLETCHER AVE	Lead	Yes	Pull Through/Non-Destructive
503 E 8TH ST	Galvanized	Yes	Pull Through/Non-Destructive
503 LIBERTY ST	Galvanized	Yes	Pull Through/Non-Destructive
506 MULBERRY AVE	Galvanized	Yes	Pull Through/Non-Destructive
508 FLETCHER AVE	Galvanized	Yes	Pull Through/Non-Destructive
509 E 7TH ST	Galvanized	Yes	Pull Through/Non-Destructive
512 MAIN ST	Galvanized	Yes	Pull Through/Non-Destructive
512 WOODLAWN AVE	Galvanized	Yes	Pull Through/Non-Destructive
515 E 9TH ST	Galvanized	Yes	Pull Through/Non-Destructive
515 ORANGE ST	Galvanized	Yes	Pull Through/Non-Destructive
515 WALNUT ST	Galvanized	Yes	Pull Through/Non-Destructive
521 MONROE ST	Galvanized	Yes	Pull Through/Non-Destructive
602 E 7TH ST	Galvanized	Yes	Pull Through/Non-Destructive
609 ADAMS ST	Galvanized	Yes	Pull Through/Non-Destructive
610 E 7TH ST	Galvanized	Yes	Pull Through/Non-Destructive



613 E 8TH ST	Galvanized	Yes	Pull Through/Non-Destructive
617 E 9TH ST	Galvanized	Yes	Pull Through/Non-Destructive
617 ORANGE ST	Galvanized	Yes	Pull Through/Non-Destructive
700 LEROY ST	Galvanized	Yes	Pull Through/Non-Destructive
702 WALNUT ST	Galvanized	Yes	Pull Through/Non-Destructive
704 E 7TH ST	Galvanized	Yes	Pull Through/Non-Destructive
704 WALNUT ST	Galvanized	Yes	Pull Through/Non-Destructive
710 NEWELL AVE	Galvanized	Yes	Pull Through/Non-Destructive
711 NEWELL AVE	Galvanized	Yes	Pull Through/Non-Destructive
714 E 11TH ST	Galvanized	Yes	Pull Through/Non-Destructive
717 MULBERRY AVE	Galvanized	Yes	Pull Through/Non-Destructive
800 E 11TH ST	Galvanized	Yes	Pull Through/Non-Destructive
811 WOODLAWN AVE	Galvanized	Yes	Pull Through/Non-Destructive
835 PINE ST	Galvanized	Yes	Pull Through/Non-Destructive
911 E 6TH ST	Galvanized	Yes	Pull Through/Non-Destructive
913 NEWELL AVE	Galvanized	Yes	Pull Through/Non-Destructive
915 NEBRASKA ST	Galvanized	Yes	Pull Through/Non-Destructive
916 COLVER ST	Galvanized	Yes	Pull Through/Non-Destructive
922 COLVER ST	Galvanized	Yes	Pull Through/Non-Destructive