

Why You Should Read This: The document below reviews the environmental impact likely from a project. This project is planned to be federally funded through your tax dollars; therefore, you are entitled to take part in its review. If you have concerns about the environmental impact of this project, raise them now. We encourage public input in this decision making process.



IOWA STATE REVOLVING FUND
REAFFIRMATION OF A FINDING OF NO SIGNIFICANT IMPACT

January 31, 2025

To: All Interested Citizens, Government Agencies, and Public Groups

An environmental review has been performed based on the procedures for implementing the National Environmental Policy Act (NEPA), for the proposed agency action below:

Applicant: City of Johnston
County: Polk County, Iowa
State: Iowa

SRF Number: CS192106201
Iowa DNR Project Number: S2022-0196B

The purpose of this letter is to provide you with a State Revolving Fund (SRF) status update. This project has previously been reviewed by the DNR and a Finding of No Significant Impact (FNSI) was issued on March 8, 2023 and finalized on April 12, 2023. This FNSI is hereby Reaffirmed including a revised route in Segment B and additional area necessary for access and staging.

A petition had been made by the City of Johnston as of August 9, 2024 to revise this project scope to include the above listed work as a continuation of the ongoing construction project. The scope addition had not been previously evaluated by the DNR. It has now been determined by the DNR, and the State Historical Preservation Office has concurred (R&C #241077971), that the additional work will result in "No Adverse Effect" to historic properties. Given the scope and location of the proposed additional work, no other impacts of the environmental criteria listed in 40 CFR Part 6 are anticipated.

This action is taken on the basis of a careful review of the engineering report, the environmental assessment and other supporting data which are on file at the Department of Natural Resources' office in Des Moines, Iowa. These are available for public review upon request. This Department will not take any administrative action on the project for at least thirty (30) calendar days from the above date. Persons disagreeing with the above environmental decision may submit comments to the department during this period. Your comments can be sent to SRF-PC@dnr.iowa.gov or directly to me at Hailey.Andersen@dnr.iowa.gov or (515) 321-7385.

Sincerely,

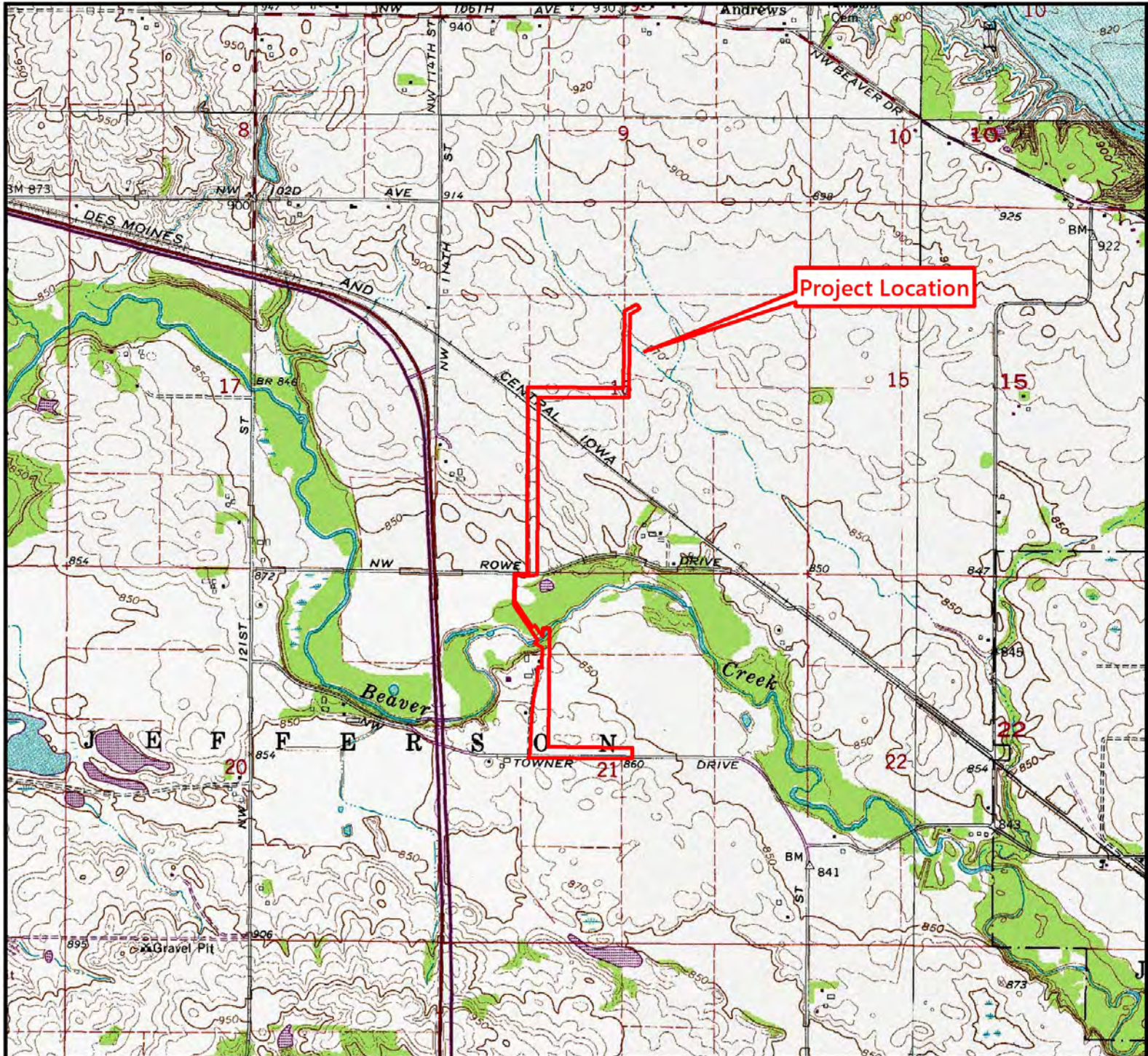
Hailey Andersen
Environmental Specialist

6200 Park Ave, Suite 200
Des Moines, IA 50321

Enclosure: Project Map

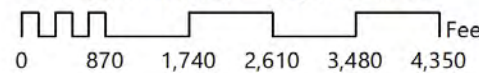
Distribution

List (email): Foth Infrastructure and Environment, LLC
Edward Boling, Council on Environmental Quality
Jake Hansen, Iowa Department of Agriculture and Land Stewardship
Ken Sharp, Ken Sharp, Iowa Department of Health & Human Services
Mindy Wells, Iowa Department of Health & Human Services
Chad Sands, Iowa Economic Development Authority
Alicia Vasto, Iowa Environmental Council
Michael Schmidt, Iowa Environmental Council
Susan Heathcote, Iowa Environmental Council
Tracy Scebold, Iowa Finance Authority
Tony Toigo, Iowa Finance Authority
Lee Wagner, Iowa Finance Authority
Rick Andriano, Iowa Finance Authority
Mickey Shields, Iowa League of Cities
Jane Clark, Sierra Club
Josh Mandelbaum, Environmental Law and Policy Center
Kate Sand, USDA Rural Development
Tokey Boswell, USDO, National Park Service, Midwest Region
Kraig McPeck, Fish and Wildlife Service, Rock Island Field Office
Ann D'Alfonso, USEPA Region VII
Kelly Beard-Tittone, USEPA Region VII
Des Moines Register



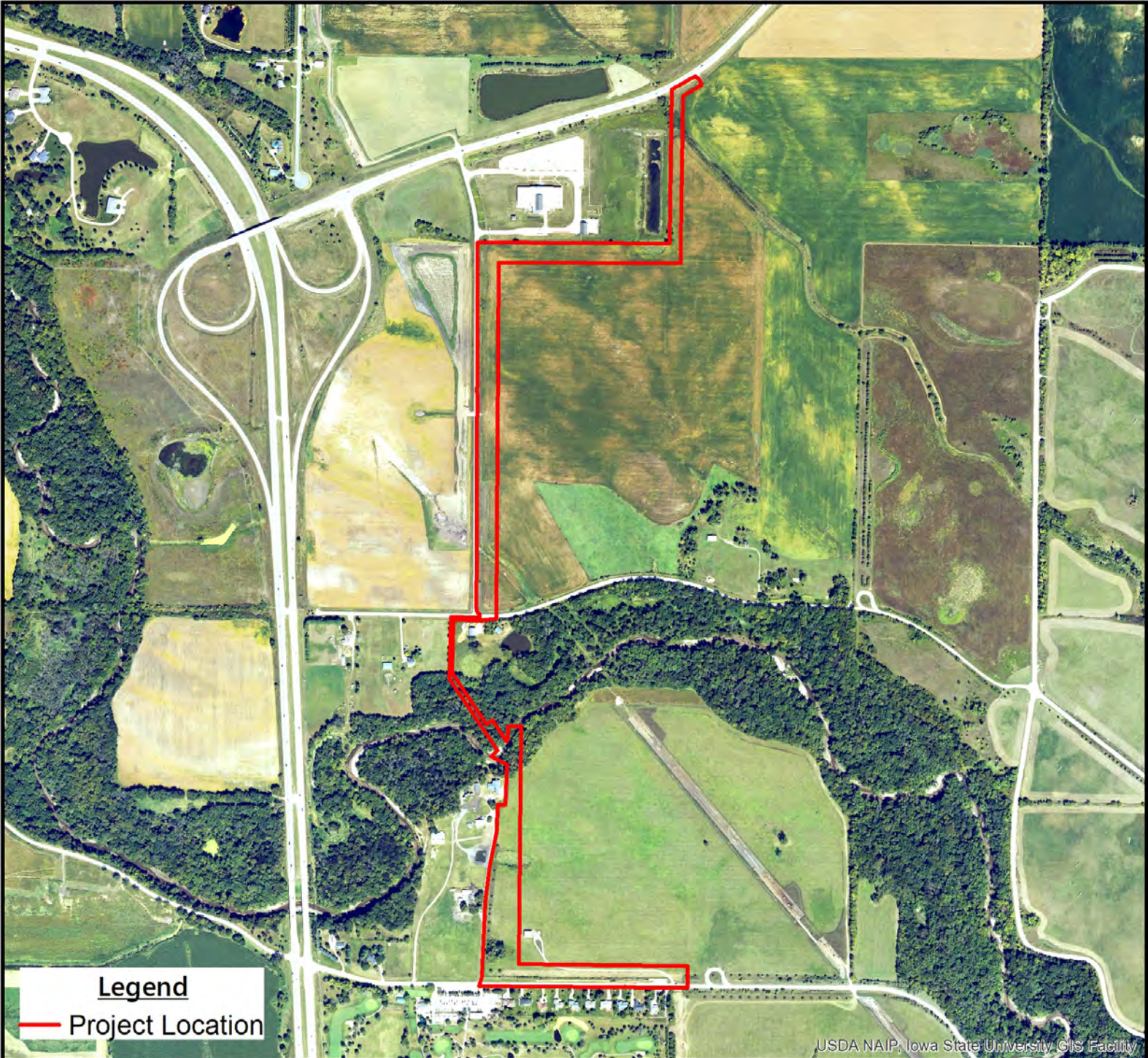
Little Beaver Creek Sanitary Sewer Extension Segments 2A, B, & C
 Reaffirmation
 Johnston, Iowa (Polk County)

Scale: 1 inch = 2,000 feet



Polk County. Image source: Wikipedia, 2024.

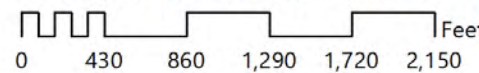
USGS 7.5 Minute Quadrangle: Grimes
 Section: 16, 21, Township: 80 N, Range: 25 W
 Date: 1976



**Little Beaver Creek Sanitary Sewer Extension Segments 2A, B, & C
Reaffirmation
Johnston, Iowa (Polk County)**

USDA NAIP, Iowa State University GIS Facility

Scale: 1 inch = 1,000 feet



Polk County. Image source: Wikipedia, 2024.

**USGS 7.5 Minute Quadrangle: Grimes
Section: 16, 21, Township: 80 N, Range: 25 W
Date: 9.2.2023**